



Pre-departure Seminar in London

JSPS Activities and

International Collaborations



Naoko Yamaoka, Overseas Fellowship Division, JSPS HQ
Yu Yonehara, Overseas Fellowship Division, JSPS HQ
28 May, 2009

Outline

- JSPS Overview

 - Function/Budgets

- Research Opportunities

 - Fellowships/International Collaboration

- Follow-up Services

 - Alumni Associations/Newsletters

Major Functions

- **Funding research initiatives**

Competitive research funding: Grants-in-Aid

- **Fostering next generation of scientists**

Research fellowships for young scientists

- **Advancing international collaborations**

Collaboration with overseas partners

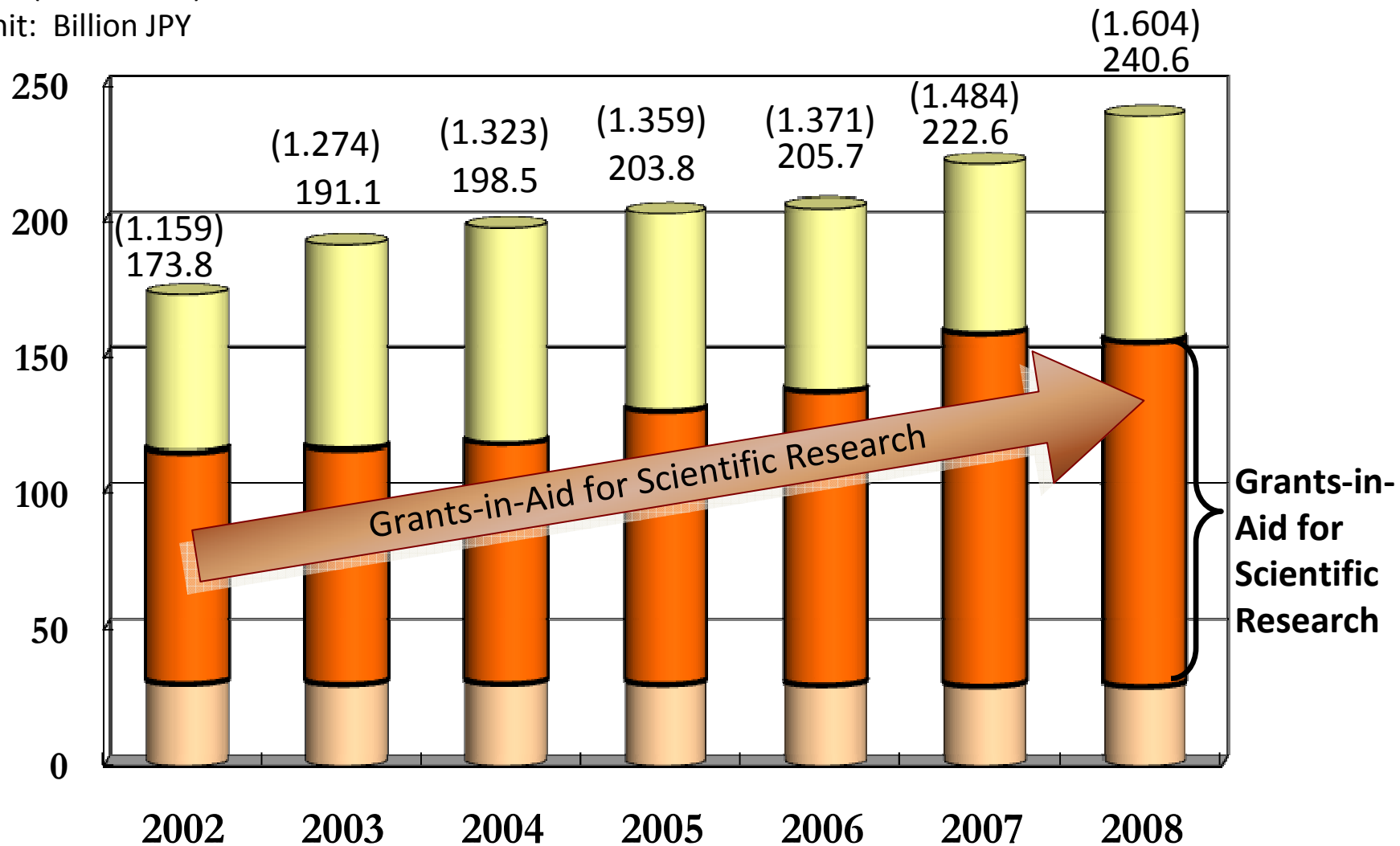
- **Promoting university reform**

Joint programs with MEXT

Budget

(Billion GBP) *1 £ ≙ ¥150

Unit: Billion JPY



Research Opportunities

Research Opportunities

Fellowships for Research in Japan

Stages of research career



Research Opportunities

Terms of Support

● Postdoctoral Fellowships

	Short-term(1–12 months)	Standard(1 -2 years)
Target	Pre/Post-doc	Post-doc (6 years after PhD)
Allowances	<ul style="list-style-type: none"> •Round-trip air ticket •Maintenance: ¥364,000(£2,427)/mth Non-PhD holders ¥200,000(£1,333)/mth •A research support allowance •Domestic travel: ¥58,500(£390) •Setting-in: ¥200,000(£1,333) 	<ul style="list-style-type: none"> •Round-trip air ticket •Maintenance : ¥364,000(£2,427)/mth •A Grants-In-Aid: ¥1,500,000(£10,000)/yr •Domestic travel: ¥58,500(£390)/yr Setting-in: ¥200,000(£1,333)

● Summer Program

	Summer Program (2 months)
Target	Pre/Post-doc
Allowances	<ul style="list-style-type: none"> •Round-trip air ticket •Maintenance: ¥534,000(£3,540)/2mth •Domestic travel: ¥58,500(£390) •Research Related Expenses: ¥100,000 (£667)

(1GBP ÷ 150JPY)

Terms of Support

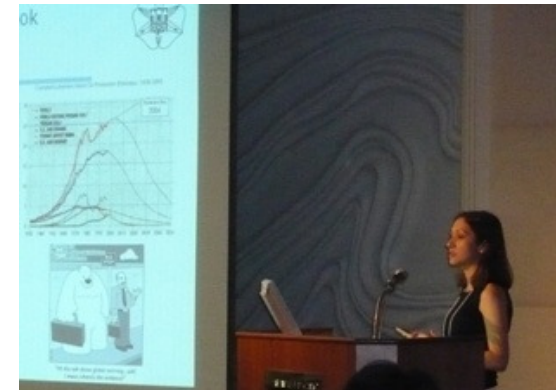
● Invitation Fellowships

	Long-term(61 days – 10 months)	Short-term(14 – 60 days)
Target	Mid-career to Professor	Professor etc.
Allowances	<ul style="list-style-type: none"> •Round-trip air ticket •Maintenance: ¥369,000(£2,460)/mth •Domestic travel: ¥100,000(£667)/yr •Research expenses: ¥40,000(£267) 	<ul style="list-style-type: none"> •Round-trip air ticket •Maintenance: ¥18,000(£120) /day •Domestic Travel: ¥150,000 (£1,000)

(1GBP ≒ 150JPY)

Research Opportunities

Summer Program



Research Opportunities: Summer Program

Schedule

Dates	Activities
June 16	Arrival & Registration
June 17	Move to <i>Sokendai</i> Opening Ceremony
June 18 – 22	Orientation
June 23	Move to host institutions
June 24 – August 24	Cooperative Research
August 25	(A.M.) Move to Tokyo (P.M.) Final Meeting
August 26	Departure



● Baggage

- 1) For use during the orientation period (+ cash!)
- 2) For use during the two months
→ sent to the host institution from Narita

Submit your Report by August 21.
One of you will give presentation as the UK representative!

Financial Support

1. Air Ticket

Round trip air ticket
*Mainland Japan

For any changes, obtain your host's permission and inform BC and JSPS!

2. Allowances :

- Maintenance Allowances: 534,000 yen(3,540£)
- Deposited to your host researcher's bank account
- Research related Expenses(Chosa Kenkyu ni). up to 100,000 yen(667£.)
- Requested by your host researcher
- Submit 'RECEIPT' by July 31

3. Insurance(Nipponkoa)

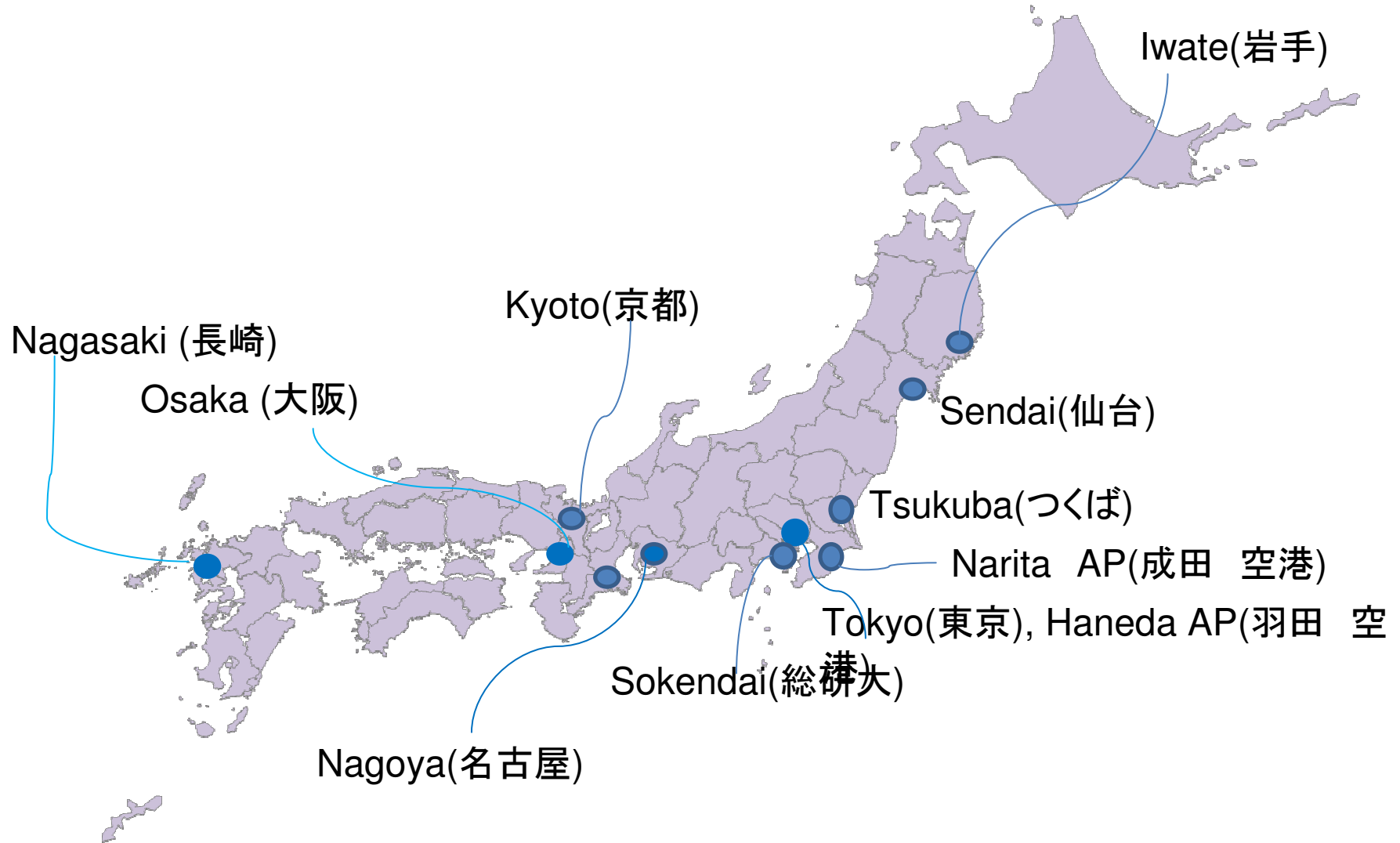
*Overseas Travel Accident Insurance

Keep your Insurance Card in handy(handed out at Sokendai)

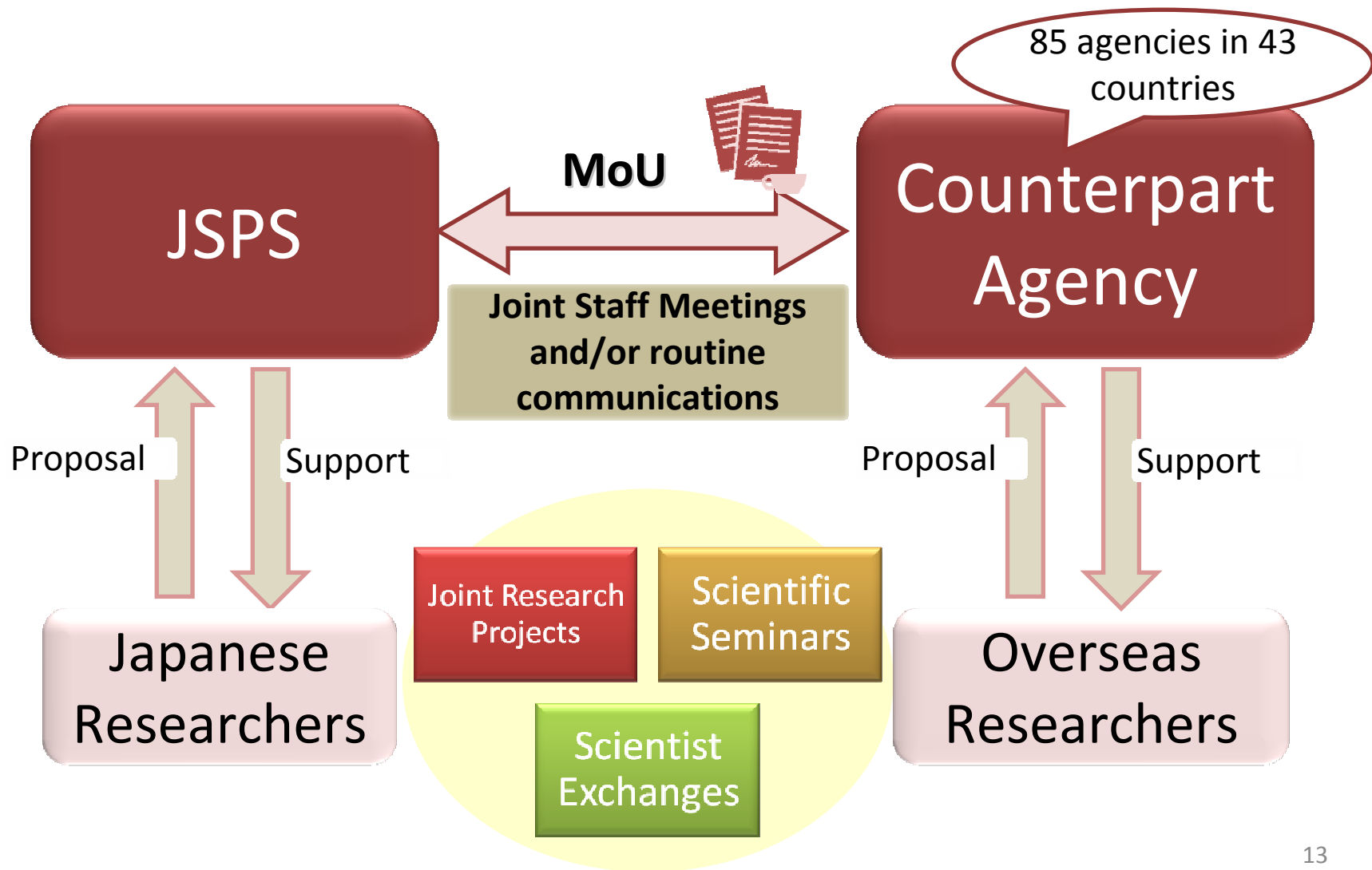


(1GBP ≒ 150JPY)

Sense of Geography ?



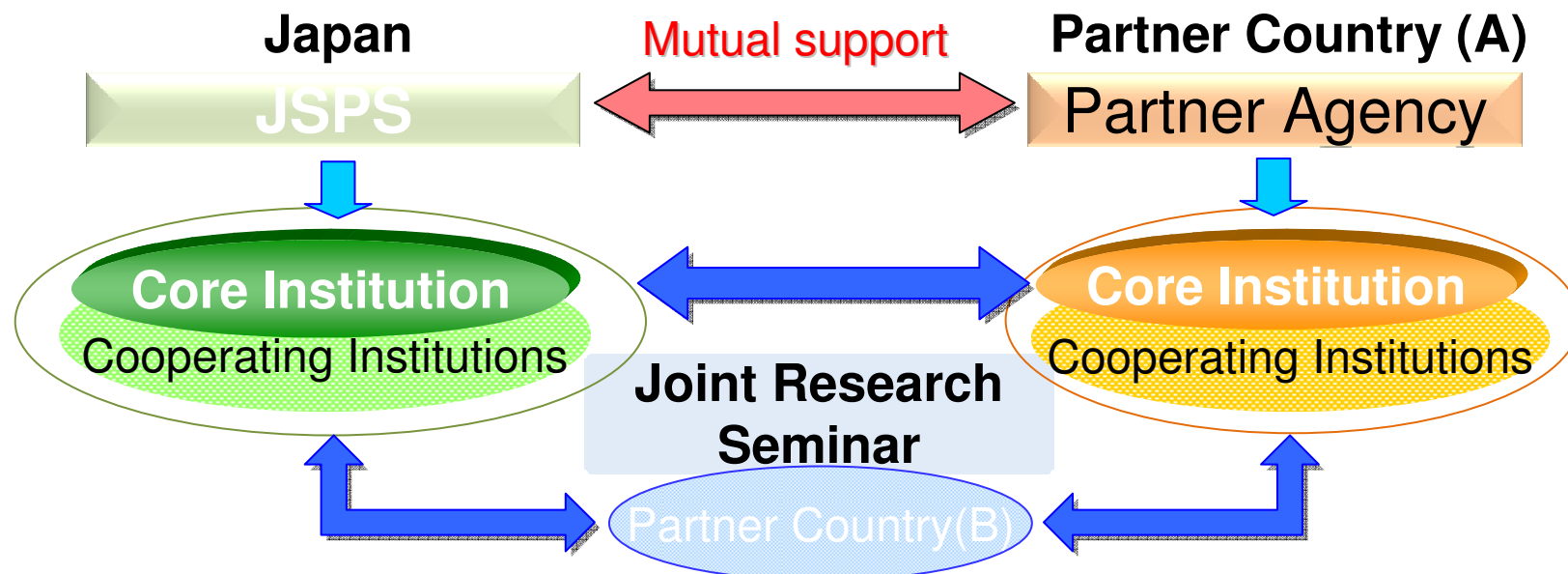
Bilateral Programs



Core-to-Core Program

OBJECTIVES

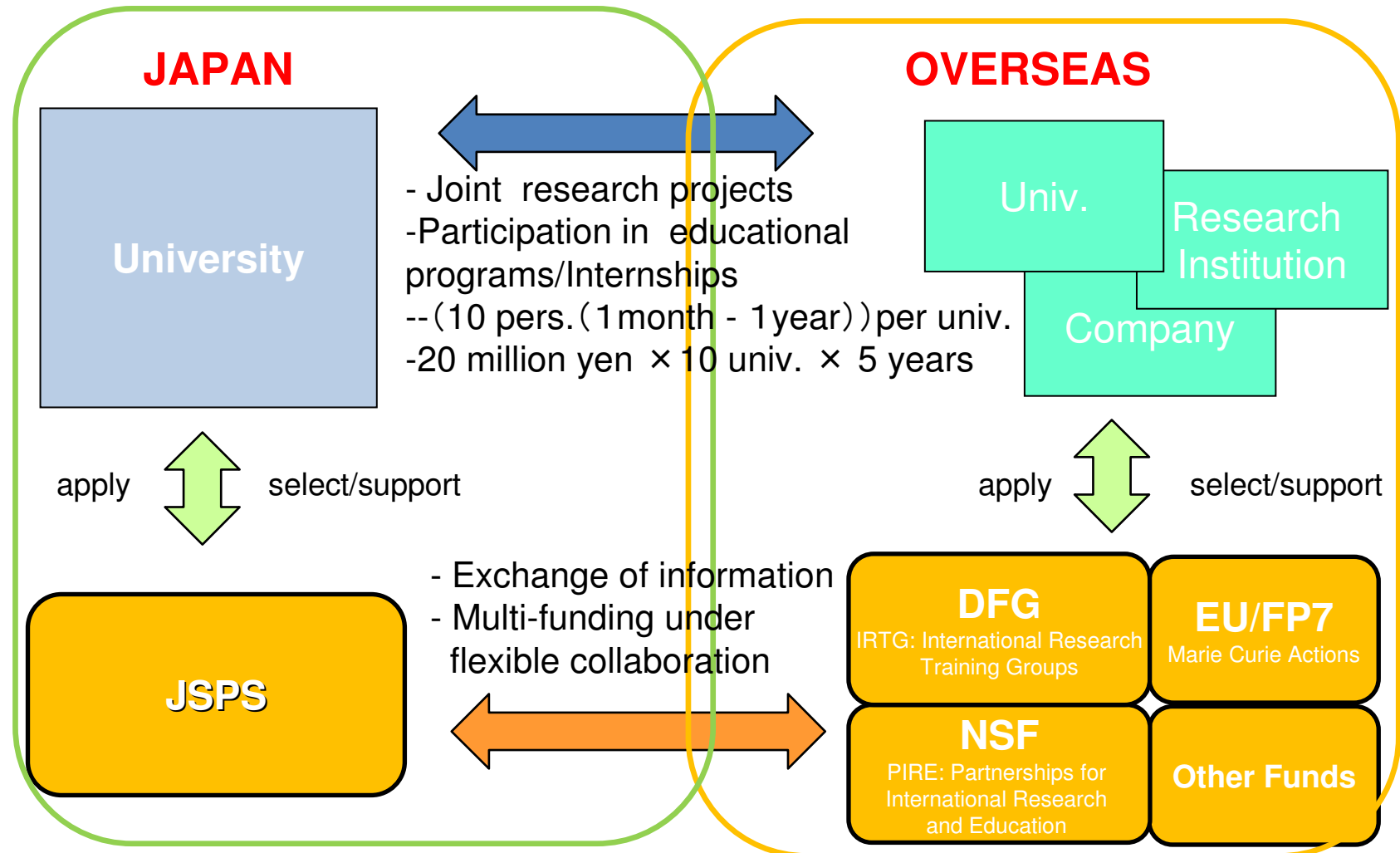
- Promote international collaboration in cutting-edge fields and create World-class Research Hubs
- Foster young researchers through networking among the most advanced research institutions in Japan and other countries



Research Opportunities

ITP International Training Program

- Strengthening overseas research & education opportunities for young researchers/graduate students



Follow-up Services

Fellows' Plaza

JSPS - JSPS Fellows Plaza - Microsoft Internet Explorer

http://www.jsps.go.jp/english/e-plaza/index.html

JSPS Japan Society for the Promotion of Science

Home >> Program Info.

JSPS Fellows Plaza

JSPS Fellows Plaza supports JSPS Fellows during their stays in Japan. The staff offers Fellows information on both living and doing research in Japan.

Publications

- JSPS Quarterly
- List of Issues
- Life in Japan for Foreign Researchers 2006-2007
- Table of Contents
- JSPS brochure 2006-2007
- PDF File

How to find us | JSPS Overseas Offices

Present Fellows

- Daily Living Support - Life in Japan
- e-Orientation
- Find Nearby Fellows
- Science Dialogue
- Program Guidelines
- General Inquiries

Past Fellows

- Alumni Associations

Prospective Fellows

- How to Apply
- Experiences and Messages from JSPS Fellows
- Research and Life in Japan by JSPS Fellows
- Messages from Former JSPS Fellows

Useful Links

Information

- December 6, 2005 Alumni Associations page redesigned
- December 6, 2005 Experiences and Messages from JSPS Fellows page redesigned
- December 6, 2005 Messages from Former JSPS Fellows newly added
- November 11, 2005 Find Nearby Fellows page newly added
- September 8, 2005 e-orientation page newly added
- May 25, 2005 Homepage created for JSPS Fellows Plaza

JISTEC Life in Japan HOME PAGE

JISTEC works with JSPS in providing a variety of Fellow support programs

JISTEC

Science Dialogue Program

- Supports fellow's stays in Japan (JISTEC)
- Offers information on both living and doing research in Japan
- Orientation(in Tokyo)
- Issues "JSPS Quarterly"
- Publishes "Life In Japan"

Research Opportunities

Science Dialogue

10 Dec 2008, Miyazaki,

Miyazaki Kita High School

Dr. M. KRIENER (Germany)



About Germany, me, and physics



10 Dec 2008, Aichi,

Aichi Zuiryo High School

Dr. B. J. RIPLEY (U.K.)



The Science of Green Tea



28 Jan 2009, Gifu,

Ena High School

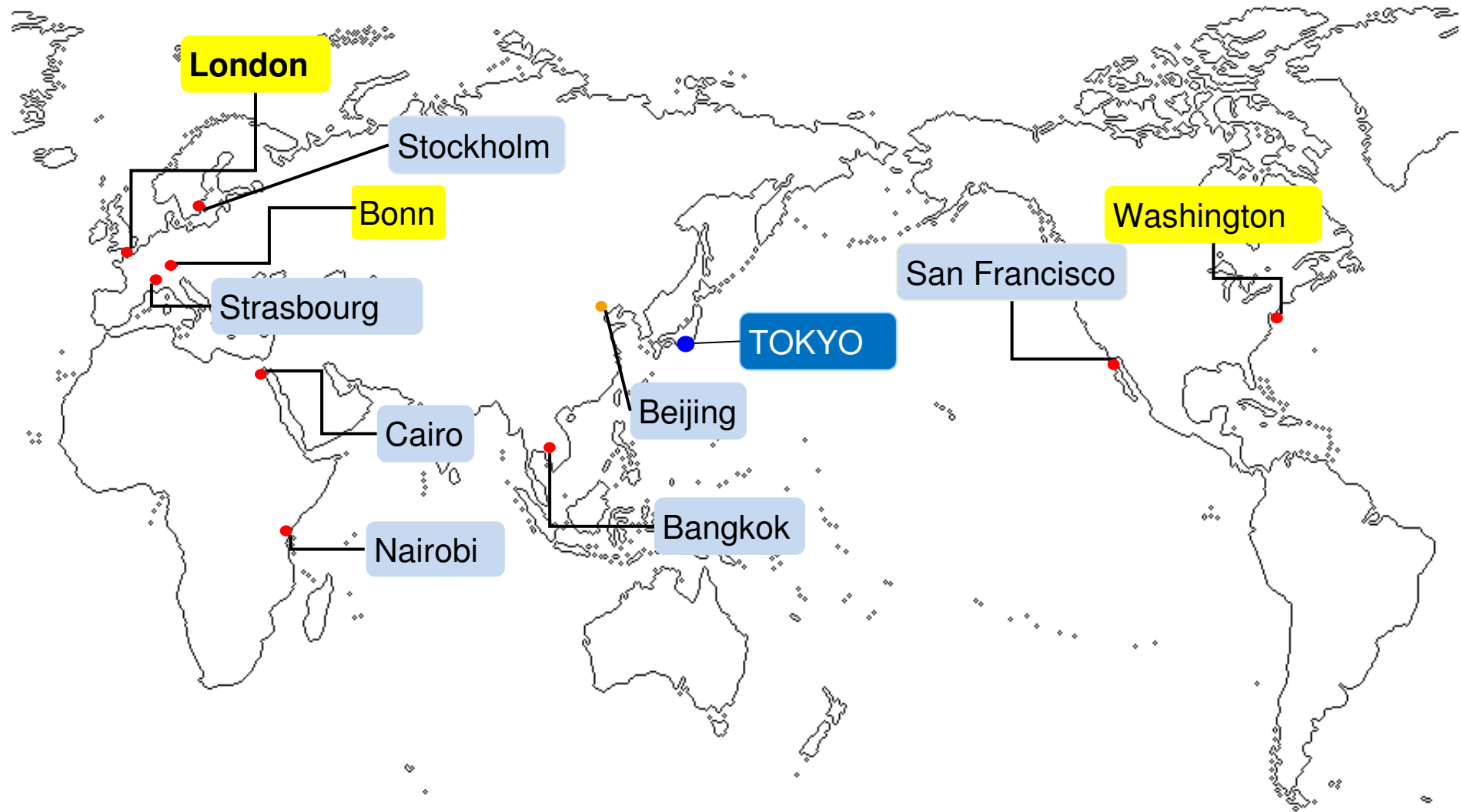
Dr. DJEMETIO, A. (Cameroon)



*Sustainable Management of wetland ecosystem
for Human Well-being and ecological Balance*



JSPS Overseas Offices



Research Opportunities

Alumni Associations, *JSPS Quarterly*



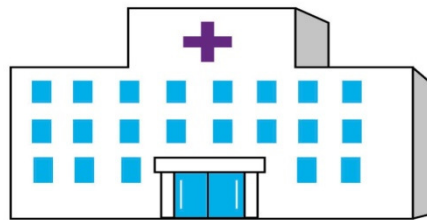
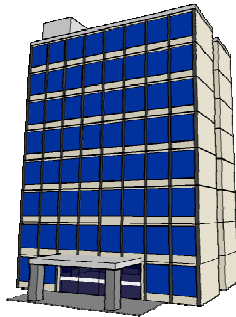
UK Alumni Meeting (21 January 2009)

Newsletter



H1N1 flu(Swine Flu)

- Stay in good general health
- Before your departure, if you become ill, seek medical care and consider postpone the flight
- While in Japan, follow guidelines set by your host institution





Thank you for your attention.

<http://www.jsps.go.jp/english/e-summer/index.html>