



A Snapshot of the JSPS Summer Fellowship

Maxine Gee, University of York/Waseda University

Posthuman Noir

In
Japanese anime & Anglo-American
Film

Advanced by robotic,
genetic or virtual
technologies...

Are these characters
more human than human?

To survive in futuristic
film noir landscapes...

Rational posthumans must
rediscover their
EMOTIONS...

What it means to be
HUMAN in the
technological age...

To find their happy
endings.

Posthuman Noir reaffirms
the central role of the
HUMAN in the future



An Investigation in Japanese Screenwriting Methods

EXT/INT. EFFECTS OF LOCATION ON STORYTELLING - BRITAIN & JAPAN

KEY AREAS	ACTION	METHOD
<p>Focused questions on:</p> <ul style="list-style-type: none"> - CHARACTER - PLOT - STRUCTURE - THEME 	<p>Screenwriting is a fairly new area of scholarly study. The aim of my investigation is to compare and contrast Japanese and British approaches to screen stories. My research so far examines these patterns in posthuman noir.</p>	<p>INTERVIEWS with:</p> <ul style="list-style-type: none"> -Screenwriters -Screenwriting teachers -Screenwriting students -Industry professionals

<p>S c r e e n p l a y</p>	<p>CHARACTER QUESTIONS</p> <p>(Anglo-American characters are goal orientated. Are Japanese characters the same? What are the differences?)</p>	<p>脚 本 or 映 画 シ ナ リ オ</p>
--	--	---

GOALS OF THE PROJECT

- Develop an understanding of the underlying theoretical, philosophical & practical considerations of Japanese screenwriting
- Apply this knowledge to original screenplays
- Forge collaborations between Japanese, British and American filmmakers.

Orientation week



- Arrival
- Classes
- Cultural experiences
- Facebook Groups



Homestay

- ▶ Varied families
- ▶ Small gift for homestay family
- ▶ Introduction to household customs
- ▶ Language proficiency
- ▶ Don't be too British



Before you leave...

- ▶ 2 separate bags – 1 for the whole trip, 1 for Sokendai
- ▶ Weather – hot and humid; June is the rainy season.
- ▶ Money - £200 for first week, allowances, research funds
- ▶ Business cards
- ▶ Poster, abstract
- ▶ Gifts – homestay, host supervisor, people you stay with or who help you.
- ▶ Rail Pass – 7 or 14 days, valid on most JR trains





Language

- ▶ Fill in the Kintetsu travel form honestly
- ▶ Learn some useful phrases
- ▶ English will be enough to get by in cities
- ▶ Willingness to try is everything - you never know where a conversation could take you.
- ▶ Some labs/universities have classes in Japanese you can join
- ▶ Apps – dictionaries, food dictionaries.

Wi-Fi – Welcome to 1990s

- ▶ Wi-Fi is not as ubiquitous as you'd expect
- ▶ University campus have Wi-Fi, your room/flat probably has LAN
- ▶ Most metro stations in Tokyo have Wi-Fi
- ▶ Starbucks
- ▶ Portable hotspots and Japanese SIM – for example:
<https://www.econnectjapan.com/products/wifi/>
- ▶ Screenshots of google maps, good old fashioned street guides





Allergies



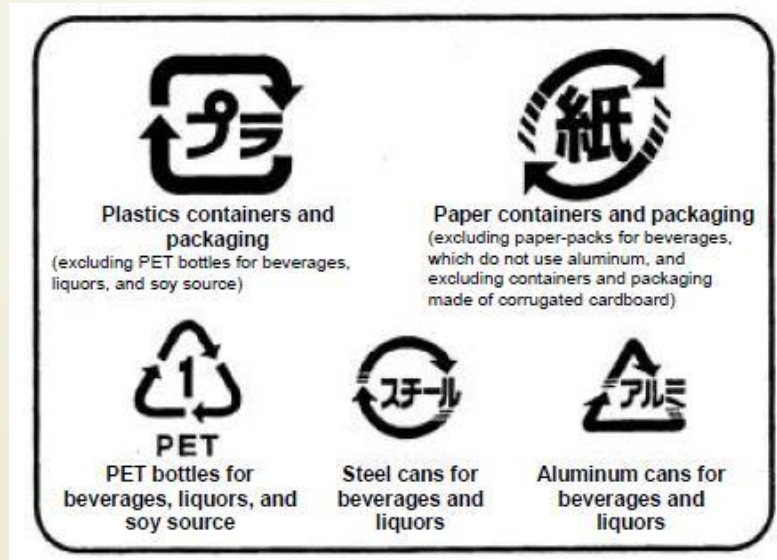
- ▶ Bedding, pillows and other allergen friendly alternatives might not be provided or might be different from what you expect.
- ▶ Find Japanese phrase for your allergy
- ▶ Inquire in advance



Tips for your stay...

Recycling

- ▶ Lack of landfill space
- ▶ It varies depending on your region
 - ▶ Find the gomi (ごみ or ゴミ) guide for your area.
 - ▶ One town has 44 different garbage categories.
- ▶ You might be expected to help out in your lab
- ▶ Don't panic, ask for help.



Lab Culture

- ▶ Community
- ▶ Welcome party
- ▶ Work hard; play hard
- ▶ Punctuality and keeping to deadlines
- ▶ All labs are different so find out the norms for your lab, don't be afraid to ask.
- ▶ Lab colleagues are welcoming, friendly and a great source of advice on so many different things.
- ▶ Group trips and tips.
- ▶ Leaving Party



Suica/Pasmo



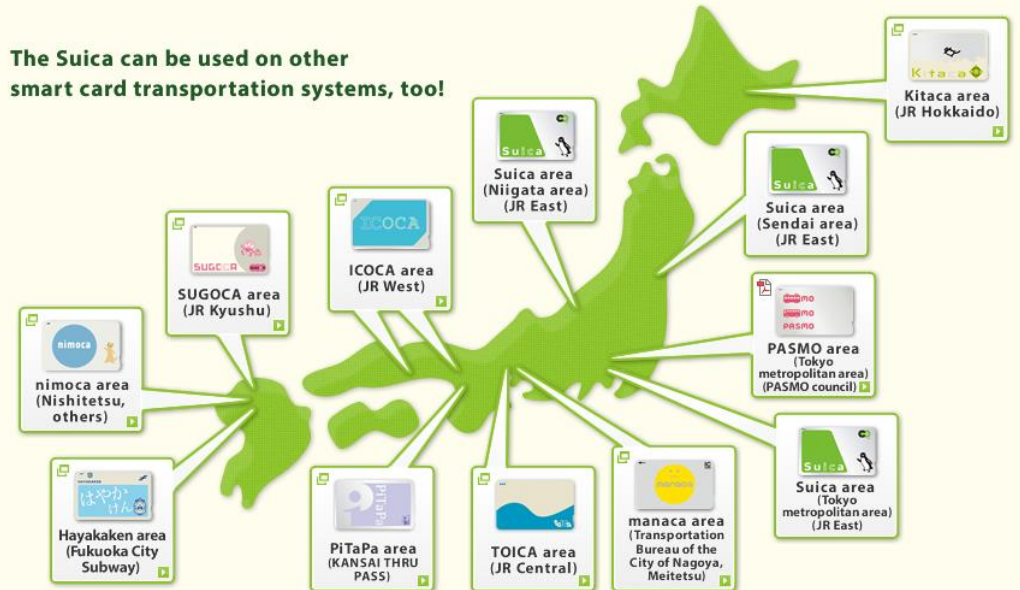
Suica card



Suika - スイカ

- 500 yen deposit
- Used on most rail, metro, bus
- Tickets can be tricky

The Suica can be used on other smart card transportation systems, too!



Food

- Sneaky tip – university canteen food is amazing and cheap
- Convenience stores and local specialities
- Train bento are a must try



- Edible is also beautiful



Vending machines



Travel

- ▶ DO IT!
- ▶ Universities have holiday in August for obon and many campuses will close for a week or more.
- ▶ Sneaky tip – maximise research time and reach by arranging to give talks at universities you want to visit in places you'd like to visit.




Matsuri

- ▶ Summer festivals are a cultural experience not to be missed.
- ▶ Yukata
- ▶ Traditional dancing, food, ceremonies





JSPS Alumni Association

- ▶ Join it – the summer fellowship is just the beginning of a journey with JSPS
 - ▶ Alumni events
 - ▶ Information about Japanese research collaborations, events, facilitating continued relationship with institutions in Japan.
 - ▶ Other JSPS fellowships short and long term.
- 



Enjoy it!