



**J S P S**

**(Japan Society for the Promotion of Science)**

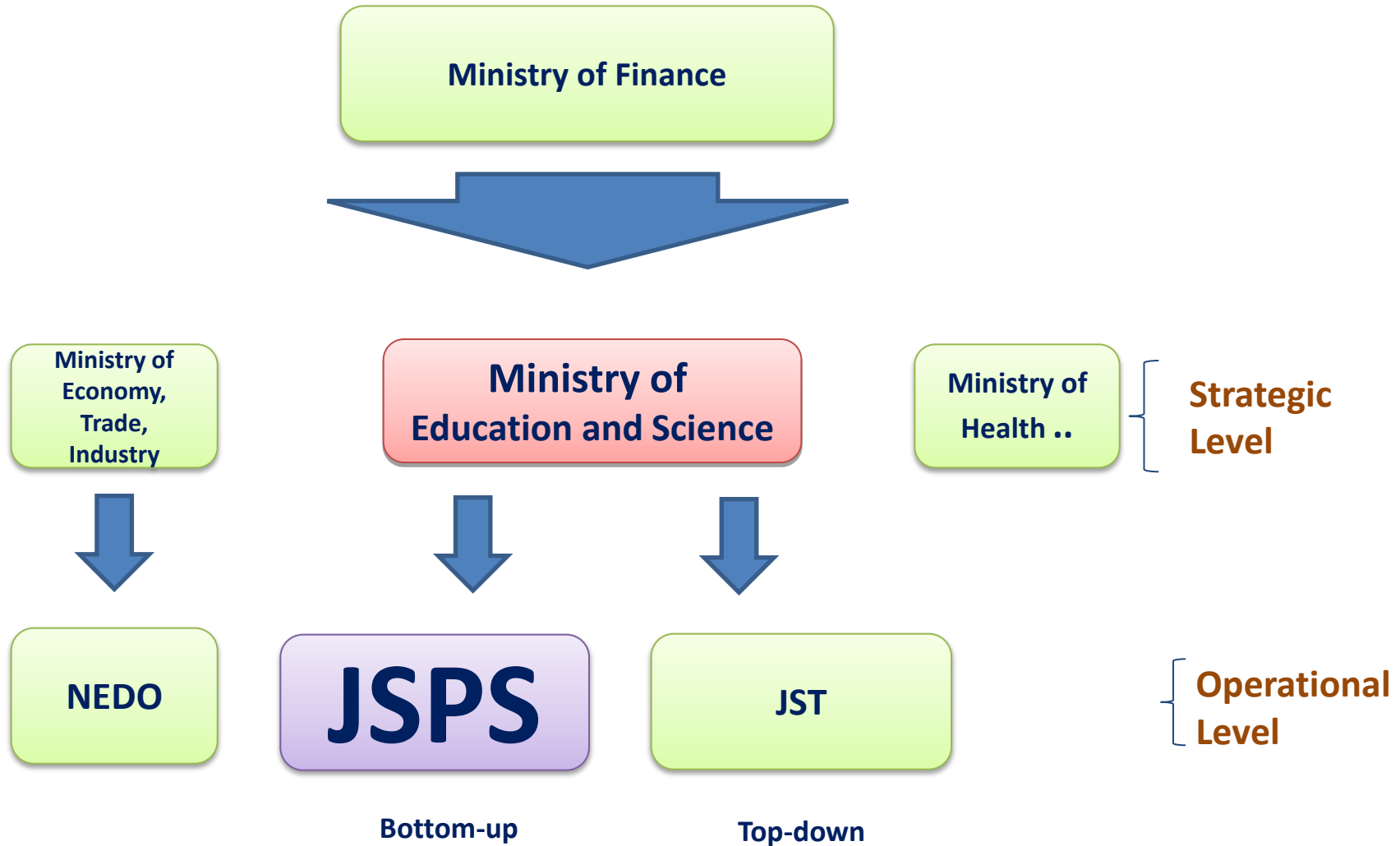
**-Japan's Research Funding Agency-**

**Tomo SAITO**

**Deputy Director  
JSPS London**

**October 2012**

# Who we are



## What we do

# Japan **S**ociety for the **P**romotion of **S**cience

- **Support for research initiatives**

Competitive research funding: Grants-in-Aid

- **Fostering next generation of researchers**

Research fellowships for young scientists

- **International collaborations**

Collaborations with overseas partners

- **Support for university reform**

Joint programs with Ministry of Education and Science

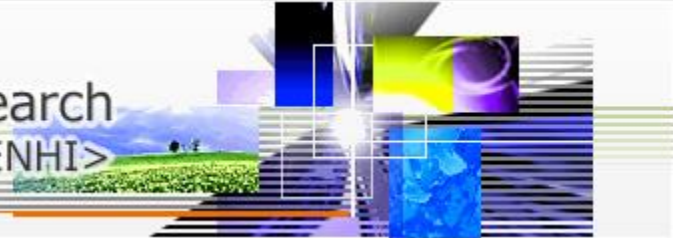


80<sup>th</sup> Anniversary

JSPS London

# KAKENHI

Grants-in-Aid for Scientific Research  
<KAKENHI>



P.7

## Purpose

**Grants-in-Aid are awarded to promote creative and pioneering research across a wide spectrum of scientific fields, ranging from the humanities and social sciences to the natural sciences. Grants are awarded to projects organized by individual researchers or research groups at Japanese universities or research institutes engaged in basic research, particularly research in critical fields attuned to advanced research trends.**



80<sup>th</sup> Anniversary

JSPS London

# JSPS Postdoctoral Fellowship Programme Guidelines

平成 24 年度  
日本学術振興会外国人特別研究員事業  
諸手続の手引

The JSPS Postdoctoral Fellowship  
For Foreign Researchers

PROGRAM GUIDELINES  
FY2012





独立行政法人日本学術振興会  
Japan Society for the Promotion of Science

**-These booklet provide the details of the terms, conditions, and procedure of this fellowship.**

**-These are very important for both you and your host researcher.**



# Support for JSPS Fellows

	Research Grant	Insurance	Japanese Lesson	others
SHORT TERM	¥81,000( £623) × the number of months of Tenure		N/A	
STANDARD	<b>KAKENHI</b> Lab-based subjects: ¥1.2 million( £9230) General subjects: ¥0.8 million( £6153)		Support from JSPS: 50,000 JPY or less  1. Fellows who will stay in Japan for the first time. 2. Fellows who have stayed in Japan less than 12 months before.	Science Dialogue Program
INVITATION Long term	<b>Domestic Research Trip Allowance</b> 100,000 yen (fixed amount) ( £769) <b>Research Allowance</b> 40,000 yen(fixed amount) ( £308)		N/A	
INVITATION Short term	<b>Domestic Research Trip Allowance</b> 150,000 yen(fixed amount) ( £1154)		N/A	

# Science Dialogue

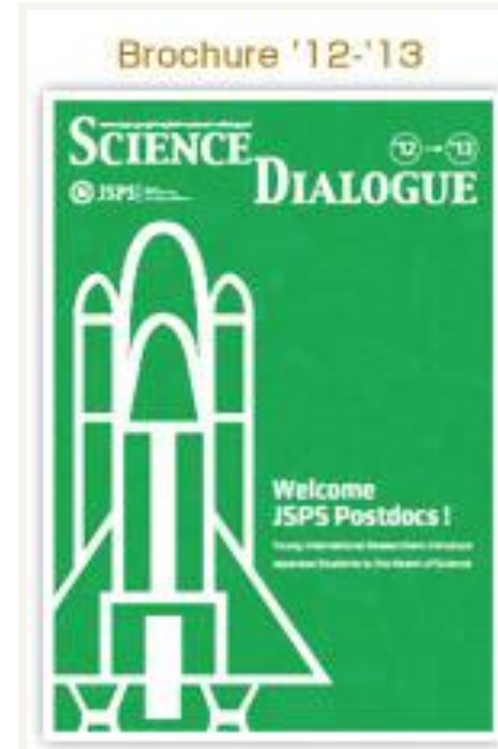


10 Dec 2008, Aichi,  
Aichi Zuiryo High School  
Dr. B. J. RIPLEY (UK)  
*The Science of Green Tea*

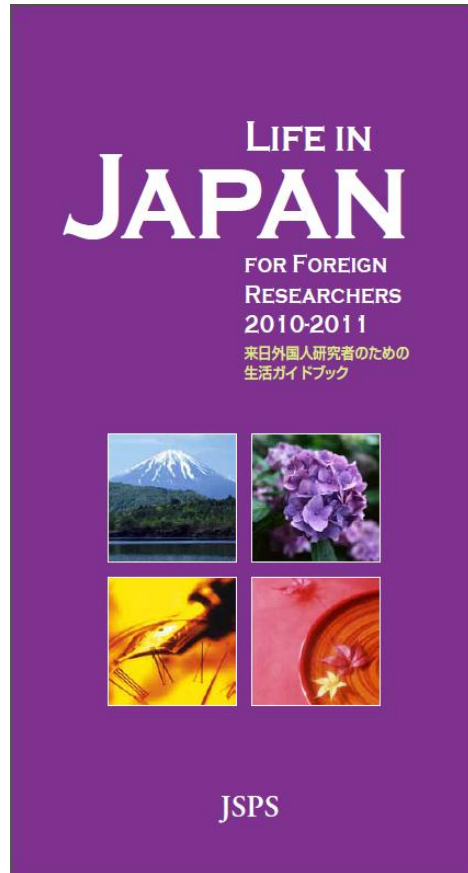


JSPS science dialogue

Search



# Life in JAPAN



## PICK UP

Living Accommodations in Japan

Opening a Bank Account

**Mobile phone**

Internet access





# Mobile Phone

**NTT**  
**docomo**

**au**

**SOFT BANK**



<http://www.nttdocomo.co.jp/support/procedure/simcard/other/index.html>



# Mobile Phone

For local use



SoftBank

## iPhone SIM card rental

Stay connected anytime, anywhere

Use your own iPhone to communicate



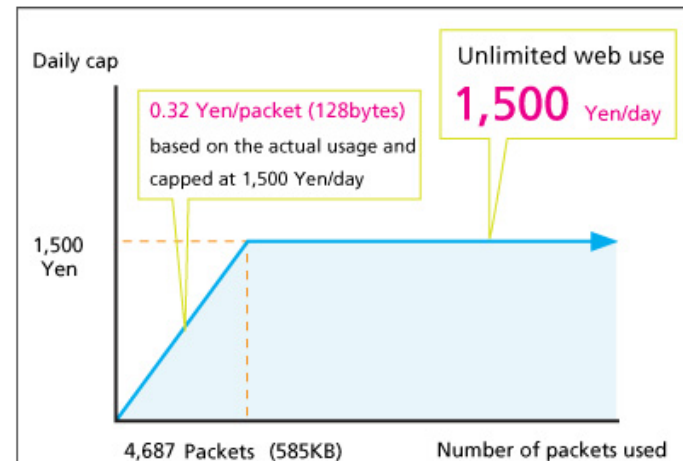
Rent a local iPhone SIM card (compatible with any SIM-unlocked iPhone) and avoid expensive international roaming charges. **Data is unlimited at 1,500Yen a day!** You can use the Internet as often and as much as you like.

### Rental Fee

Rental fee	<b>105Yen/Day</b> (incl.tax)
Communication fee	Refe to <a href="#">rate table</a>
Administration fee	<b>315Yen/contract</b> (incl.tax)

- The data communication (e.g. web browsing, web based email, packet communication etc.) charge is 0.32 yen/packet(128bytes) and this charge is capped at 1,500 yen per day.
- Data cap plan does not cover rental fee, voice calls, video calls, SMS, SIMail(MMS), International SMS, or International SIMail(MMS).
- Mobile phone connections to a computer via USB cable or mobile

### How we bill data



<http://www.softbank-rental.jp/e/rental-plan-ib03.php>



# Visa

**Applying for a visa is your personal responsibility!**

	Summer Program	Postdoc Fellowship (Short-term)	Postdoc Fellowship (Standard)	Invitation Fellowship (Short-term)	Invitation Fellowship (Long-term)
<b>Application</b>	Not required	90 days or less: Not required	Required	Not required	90 days or less: Not required
		91 days or more: Required			91 days or more: Required
<b>Status</b>	-	"Researcher" "Professor"	"Researcher" "Professor"	-	"Cultural activities" "Researcher" "Professor"



# Alien Registration (1)

- Fellows who are planning to stay in Japan for 91 days or longer must do alien registration within 90 days of the date they entered Japan.
- Registration is carried out at the municipal office of your city or ward.



# Alien Registration (2)

- New residency management system (from 9 July 2012)
    - Fellows who will stay in Japan for 4 months or longer
- Main changes (e.g.)**
- ✓ **A resident card will be issued at airport instead of alien registration card from the municipal office.**
  - ✓ **Re-entry permit from the immigration bureau is not required if you leave Japan and will return within 1 year.**



Immigration Bureau of Japan

[http://www.immi-moj.go.jp/newimmiact\\_1/en/index.html](http://www.immi-moj.go.jp/newimmiact_1/en/index.html)



# National Pension

- ❑ **Not required to enroll in the Japanese National Pension System if your stay in Japan is less than 5 years.**
- ❑ **Fellows from the UK should continue their enrollment in the British Pension System.**



**HM Revenue & Customs**

**<http://www.hmrc.gov.uk/nic/japan.htm>**



# National Health Insurance

- Fellows who will stay in Japan for 1 year or longer are obliged to join the national health insurance program.
- Application for enrollment in the program is made at the national health insurance section of your local municipal office.
- Allowances under the fellowship  $\neq$  Salary



# Risk Management - Earthquakes





# Preparing for an Earthquake

- Actions to ensure
  - e.g.
    - (1) Protecting yourself
    - (2) Taking refuge
- Provide information in advance to your host researcher and institution on how to contact you in case of an emergency.





British Embassy Tokyo

# UK in Japan

London 16:05, 04 Oct 2012  
Tokyo 00:05, 05 Oct 2012

Help for British nationals

Visiting the UK

About us

Business

News

You are here: [Home](#) > [Help for British nationals](#) > [Living in Japan](#) > [Natural Disasters](#) > [Earthquake preparedness](#)

Print Email Page

6

## Passports

### Living in Japan

- > [Notarial services](#)
- > [Marriage, birth and death](#)
- > [Our service fees](#)
- > [Registering with us](#)
- > [Practical information](#)
- > [What happens when you retire](#)
- > [Natural Disasters](#)
- > [Earthquake preparedness](#)
  - > [Prepare Yourself Now!](#)
  - > [If an earthquake happens](#)
  - > [Help after a natural disaster](#)
- > [Tsunami Advice](#)
- > [Typhoon Advice](#)
- > [Emergency kit](#)
- > [Making an appointment](#)

## Earthquake preparedness

### EARTHQUAKES IN JAPAN

Japan lies in a major earthquake zone and is subject to frequent tremors of varying intensity, the vast majority of which will not cause any damage or injury. Despite much research and speculation, nobody can predict when or where a large earthquake might occur, but there are things you can do to be ready. These can make the difference between life and death.

#### [Prepare Yourself Now!](#)

[Prepare Yourself Now!](#)

#### [If an earthquake happens](#)

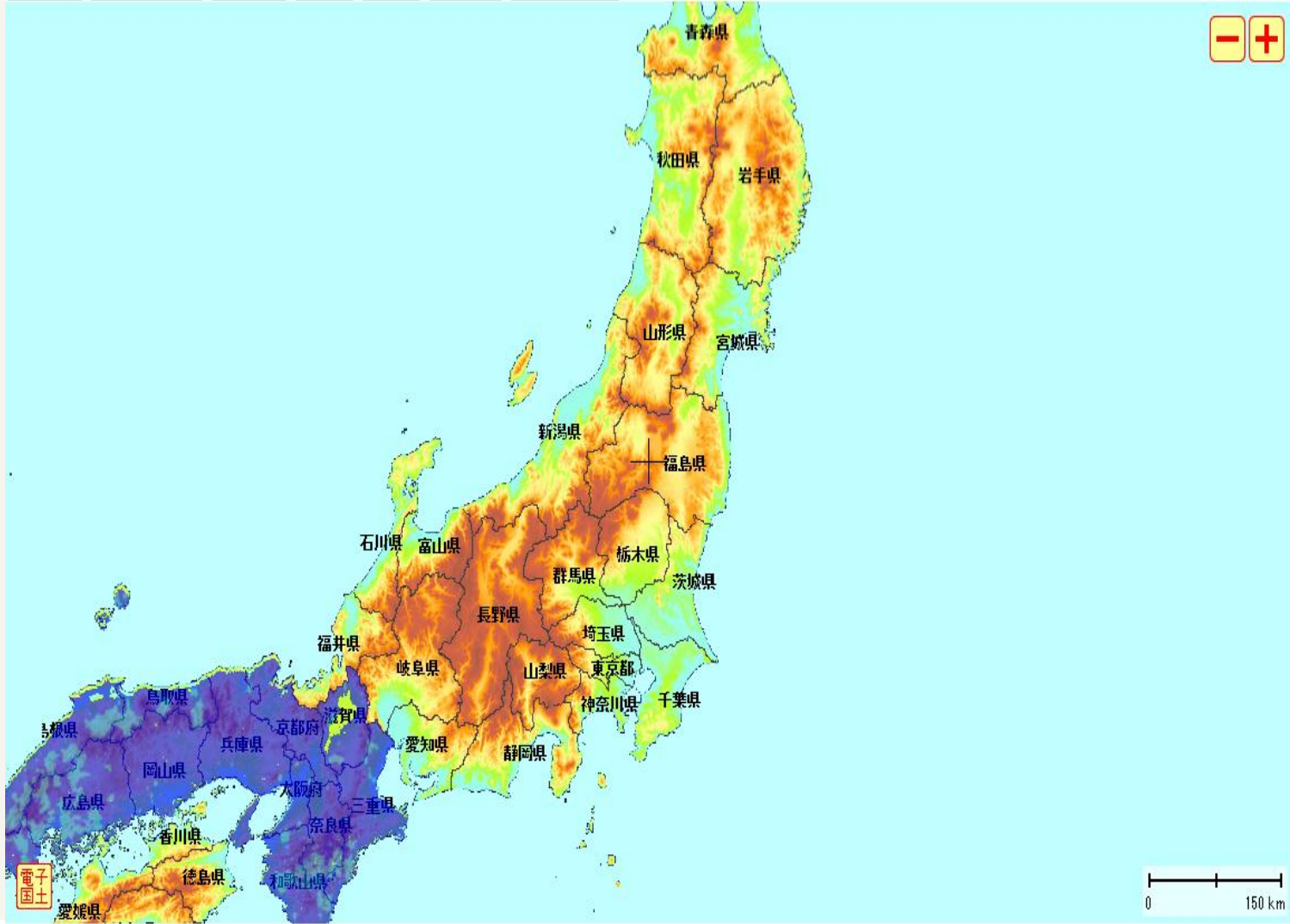
## Video message

[Watch a video message](#) from the Consul at the British Embassy in Tokyo containing 5 tips for preparing for the unexpected.

# Estimated and measured 1m height environmental radioactivity level at monitoring

[PDF版はこちら](#)

- 九州・沖縄
- 中国・四国・近畿
- 中部・北陸
- 関東
- 東北
- 北海道
- [初期位置へ戻る](#)



[日常生活と放射線についてはこちら](#)

**警戒区域・計画的避難区域など**

**航空機モニタリング結果** ?

現状の放射線の影響の把握にあたっては、更新日の新しい結果を参考にしてください

平成24年4月25日時点(近畿、中国地方) ▾

- 航空機 軌跡
- 空間線量率
- セシウム134 + 137の合計
- セシウム134
- セシウム137

[測定結果資料\(PDF\)はこちら\(近畿\)](#)

[測定結果資料\(PDF\)はこちら\(中国\)](#)

[測定結果資料一覧はこちら](#)

地表面から1mの高さの空間線量率(μSv/h)

	19.0 < 測定値
	9.5 < 測定値 ≤ 19.0
	3.8 < 測定値 ≤ 9.5
	1.9 < 測定値 ≤ 3.8
	1.0 < 測定値 ≤ 1.9
	0.5 < 測定値 ≤ 1.0
	0.2 < 測定値 ≤ 0.5
	0.1 < 測定値 ≤ 0.2
	測定値 ≤ 0.1

測定結果が得られていない範囲

※本マップには天然核種による空間線量率が含まれています。  
 ※年間の日常生活に換算した場合  
 例えば、1.0μSv/hrは、年間約5mSv  
 など。詳細[はこちら](#)

**放射線量等分布マップ** ?

**放射線量等分布マップ(走行サーベイ)** ?

小学校・中学校



# JSPS London

Established in 1994

8 Staff Members

Strengthen Japan-UK academic linkages



80<sup>th</sup> Anniversary

JSPS London

# The facts

We have supported

**663** fellows

to do research in Japan

We have supported

**80** fellows

newly selected annually

**384** former fellows

Joining UK-JSPS alumni association

Participation rate

**58** %

**43** Awardees

selected for revisiting

**9** Awardees

selected annually for revisiting

**2** Awardee

selected for organising symposium

**1** Awardee

selected annually for organising symposium



80<sup>th</sup> Anniversary

JSPS London

# UK-JSPS Alumni Association



80<sup>th</sup> Anniversary



JSPS London

# Symposia



30<sup>th</sup> Anniversary

JSPS London

# Programme Information Event



The first thing to say about Japan is...

*Japan is totally awesome!!*

... so you should definitely  
apply for a JSPS fellowship

80<sup>th</sup> Anniversary



JSPS London



# UK-JSPS Alumni Association



JSPS London UK-JSPS Alumni Association

[Contact Us](#) [Data Protection](#) [JSPS London](#)

Home

About UK-JSPS Alumni Association

Events

Funding opportunity for alumni

JSPS Fellow's Experiences in Japan

Alumni Member's Activities

Contact Us

To Register

Search for Members

Alter Details



## UK-JSPS Alumni Association

Making UK-Japan Academic Linkage

[Benefits for Joining](#)

NEWS

[Archive](#)

**30 Apr 2012** [Pre Departure Seminar and Alumni Evening](#)

Pre Departure Seminar and Alumni Evening on May 25th (by invitation only)  
[ [see more](#) ]

**26 Apr 2012** [UCL Symposium \(25th to 26th June 2012\)](#)

Supported by the JSPS London PHASE 2 Symposium Scheme "Mitochondria- from the fundamental aspects to medical importance." UCL ...  
[ [see more](#) ]

**28 Feb 2012** [Cancer Research UK Symposium \(9th to 10th February 2012\)](#)

Title of Symposium: Interdisciplinary approaches for the study of senescence UK Scientific ...



80th Anniversary

JSPS London

# UK-JSPS Alumni Association



**JSPS London**

18 hours ago via RSS Graffiti

## **EU-Japan project that aims to demonstrate highly efficiency solar cells and their deployment in solar concentrator systems**

Imperial College is participating in a large EU-Japan project that aims to demonstrate highly efficiency solar cells and their deployment in solar concentrator systems. The project is a joint initiative between the EU-FP7 programme and Japanese New Energy Development Organisation (NEDO) and will run until the end of 2...

[See more](#)

Source: Alumni Members Activities

Published: 2012-05-01 18:45:50 UTC

Share · via RSS Graffiti



**JSPS London**

20 hours ago via RSS Graffiti

## **Japans Shrinking Regions in the 21st Century: Contemporary Responses to Depopulation and Socioeconomic Decline**

Japans Shrinking Regions in the 21st Century: Contemporary Responses to Depopulation and Socioeconomic Decline, Amherst, NY: Cambria Press.  
Co-author Dr. Peter C. Matanle, University of Sheffield

Source: Alumni Members Activities

Published: 2012-05-01 17:23:54 UTC

Share · via RSS Graffiti

[Like](#) · [Comment](#)



**JSPS London**

4 hours ago via RSS Graffiti

## **IX International Symposium on "Radiation from Relativistic Electrons in Periodic Structures"**

IX International Symposium on "Radiation from Relativistic Electrons in Periodic Structures" RREPS'11, September 12-16, 2011, Royal Holloway, University of London. Proceedings are being published in Journal of Physics: Conference Series. <http://rreps.tpu.ru/> Organised by Dr. Pavel Karataev, Royal Holloway, University of London

Source: Alumni Members Activities

Published: 2012-05-02 08:57:16 UTC

Share · via RSS Graffiti



**JSPS London**

19 hours ago via RSS Graffiti

## **Growth and electrical characterisation of o-doped boron layers on (111) diamond surfaces**

Growth and electrical characterisation of o-doped boron layers on (111) diamond surfaces, Journal of Applied Physics, 111, 033710 (2012) (Result of research conducted during a JSPS Short Term Postdoctoral Fellowship)  
First Author Dr. Robert Edgington, University College London

Source: Alumni Members Activities

Published: 2012-05-01 18:08:21 UTC

Share · via RSS Graffiti



80<sup>th</sup> Anniversary

JSPS London

# Thank you.



Tomo SAITO

Deputy Director  
Japan Society for the Promotion of Science (JSPS)  
14 Stephenson Way, London, NW1 2HD, United Kingdom  
+44 (0)20 7255 4660 [saito@jsps.org](mailto:saito@jsps.org)

 Find us on  
Facebook



80<sup>th</sup> Anniversary

JSPS London