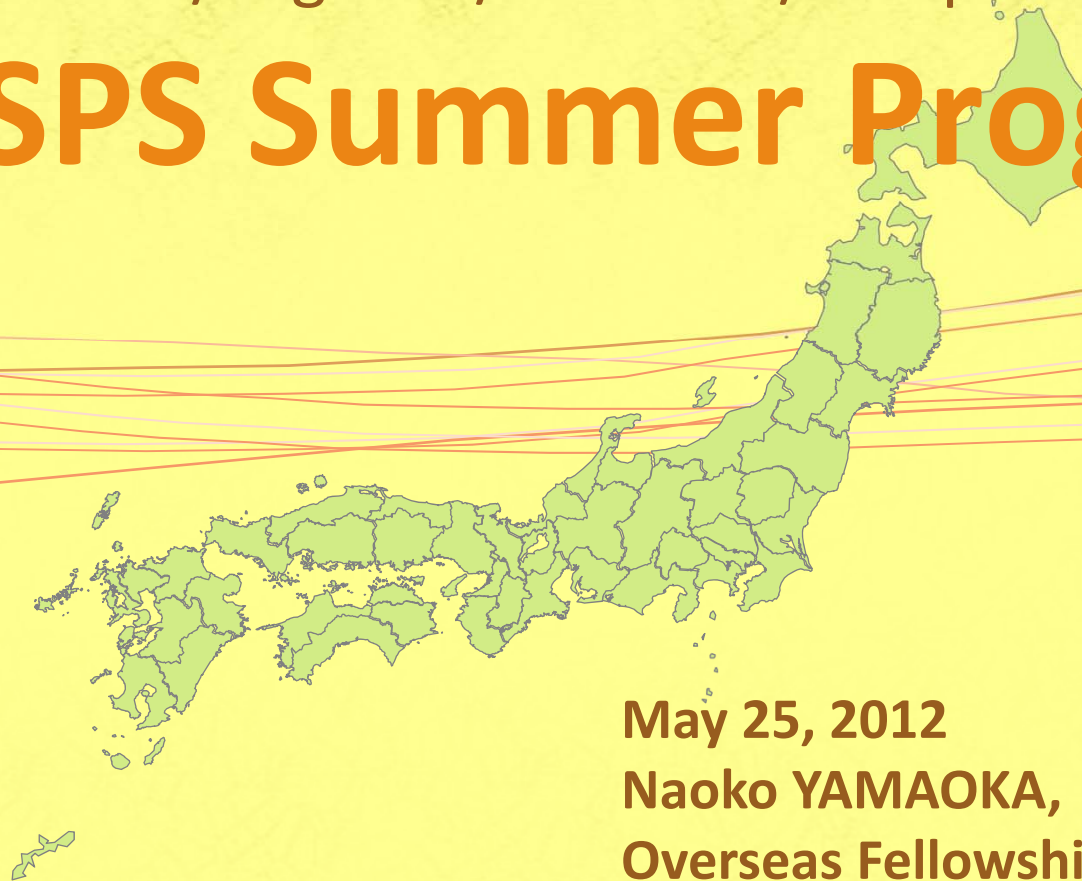


Pre-Departure Orientation in LONDON

Living and Doing Research Abroad

(Finance/Logistics/Schedule/Passport and Visas)

JSPS Summer Program



May 25, 2012

Naoko YAMAOKA,

Overseas Fellowship Division, JSPS

Topics

- Introduction
- Before You Come to Japan
- When you are in Japan



Introduction



History of the Program



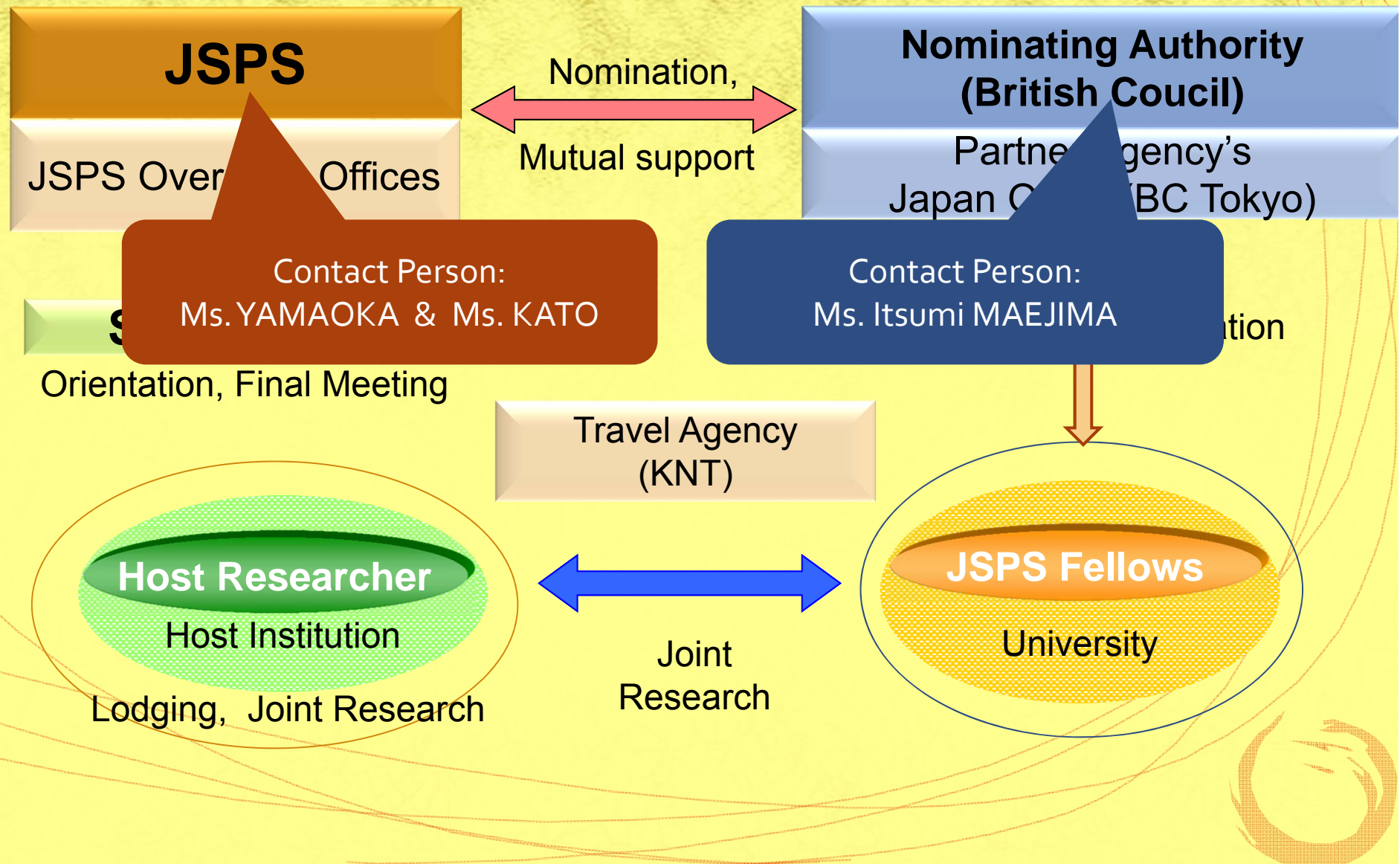
~2002: • MEXT Research Experience Fellowships
for Young Foreign Researchers
• MEXT/NSF Summer Program

2003~ : ★ JSPS Summer Program ★

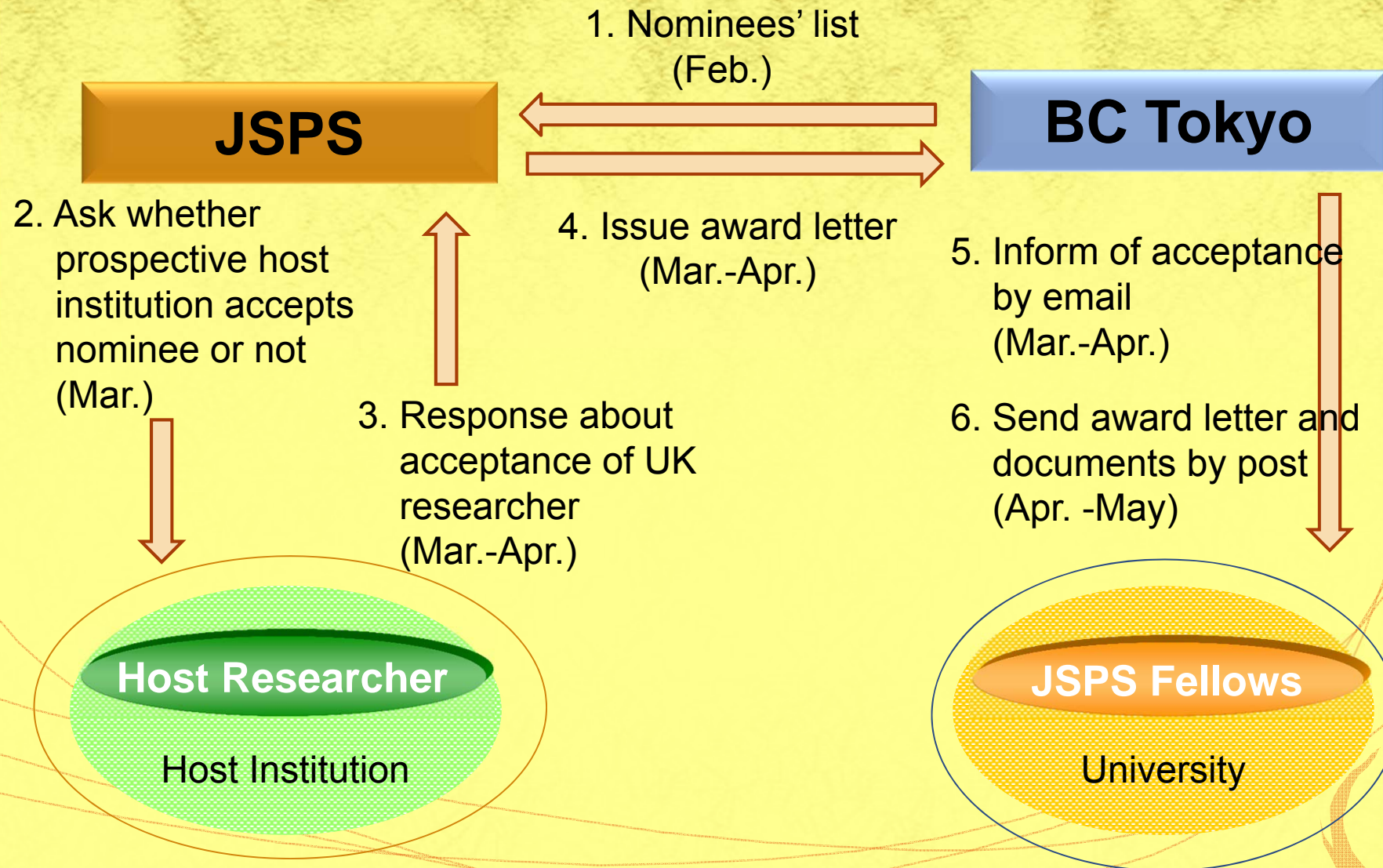
Participants : 116 pre/postdoctoral researchers
(US:65, UK:10, France:13, Germany:13 and Canada:15)



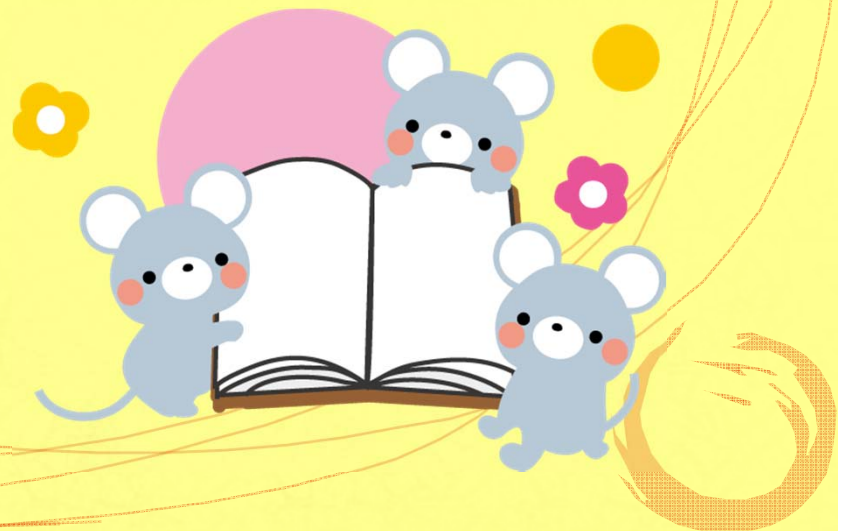
System of the Program



Issuing Award Letter



Before You Come to Japan



Documents: Refer your file

AWARD LETTERS from JSPS

- ID number for UK Fellows starts with SP121XX
- **“Terms and Conditions”**
- Health Insurance Guideline



VISA

- No visa is necessary for British if your stay is less than 90 days
- If you should need a visa: JSPS will issue a Financial Support Certificate



Preparation



- Consultation with host

- Research plan (Research related expenses up to 100,000yen)
- Lodging (JSPS does not arrange)
- How to get to your host institute from Tokyo
- Extension of your stay in Japan, if desired

- Baggage

50,000 yen (¥380)

- 1) Cloths and items for use during the orientation period (+ cash!)
- 2) For use during the rest of your stay

→ will be sent to your host institute from Narita Airport
(If you arrive on June 12)



Useful Websites

- KNT registration for air tickets

<http://www.knt.co.jp/ec/2012/jsps/>



*Domestic travel can be arranged by KNT

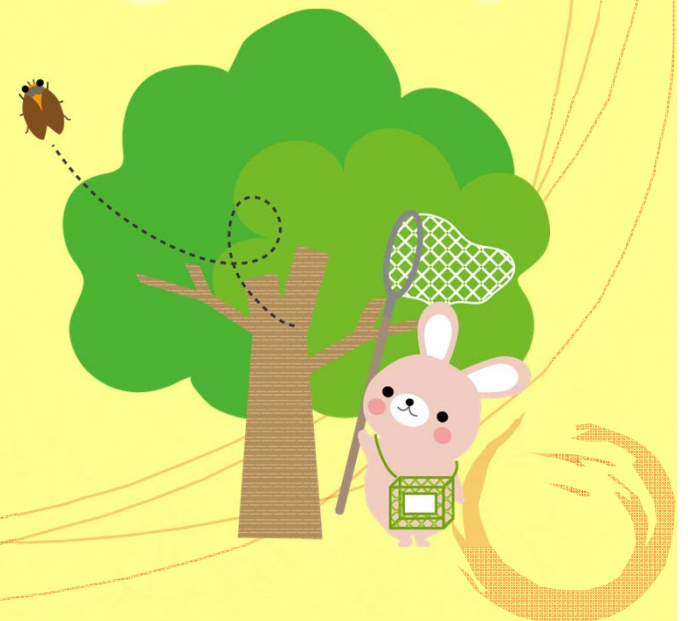
*Cell phones can be rented via KNT's website

- Train connections found on 'Jordan' website

A screenshot of the JSPS Summer Program 2012 website. The header features a banner with a book and glasses, and the text "Summer Program 2012 JSPS Japan Society for the Promotion of Science". To the right is a navigation menu with 10 items, where "Air ticket arrangement" is highlighted in orange. Below the header, a note states that the page covers the same contents as the "Terms and Conditions for JSPS Summer Program 2012" enclosed in the award letter. The main section is titled "1 Program schedule" and shows the dates "June 12 (Arrival) August 22 (Departure), 2012". A table follows, detailing the program schedule and accommodation for each date.

Date	Schedule	Accommodation
12 June	Arrival in Japan at Narita International Airport	International Garden Hotel Narita
13 June	Opening of the Program Hold an opening reception	Shonan Village Center (SVC)*
13 - 18 June	Orientation session**	
19 June	Move to host institutions	Accommodation arranged by the respective host institution
20 June - 20 August	Research experience at host institutions	
21 August	Move to Tokyo Hold a research report presentation meeting and a farewell party	Hotel Grand Palace
22 August	Departure from Japan	

When you are in Japan (Logistics, Finance & Obligations)



Schedule

Dates	Activities
June 12	Arrival. Hotel Registration
June 13	Move from Narita to Sokendai Opening Ceremony
June 13– 18	Orientation
June 19	Move to Host Institution
June 20 – August 20	Research
August 21	(A.M.) Move to Tokyo (P.M.) Final Reporting Meeting
August 22	Departure



Submit your Report by August 17.
The representative will talk!

Orientation at Sokendai

Date (tentative)	Activities		Housing
Day 1		Opening Ceremony	
Day 2			
Day 3	Poster Session		Host family
Day 4	Home-Stay(2 nights)		
Day 5	Lectures Japanese Language		Sokendai
Day 6			
Day 7	Move to Host Institution		Near host institution

Submit the summery deadline is May 26.

Arranged by Sokendai

Submit the summery
deadline is May 26.

Arranged by Sokendai

Sense of Geography ?



Financial Support

1. Air Ticket

Round-trip air ticket

*Make arrangements through KNT.

For any changes, obtain your host's permission and inform JSPS and BC!

2. Allowances :

- Maintenance Allowances: 534,000 yen(£4,000)
 - Domestic Research Trip Allowance: 58,500 yen(£450)
- * Bring some cash with you!!

Deposited in your host researcher's bank account

3. Insurance(Nipponkoa)

*Overseas Travel Accident Insurance

“*Keep your Insurance Card in hand(handed out at Sokendai)



What you need to do



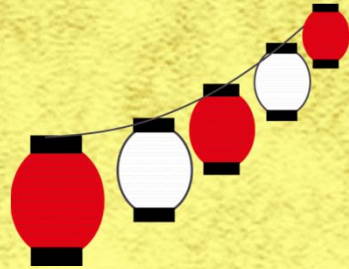
- Research WORK!

(You may be visited by JSPS officials)

- Submit receipt for Allowances
- Submit report , questionnaire, mailing address for future contact

JSPS Quarterly&
UK Alumni Association

TIPS



- Enjoy mixing with your colleagues, local community
- Konnichiwa, Arigato
- Summer in Japan... festivals, fireworks... and ... very hot and humid !!!



JSPS Fellowships for Research in Japan



Ph.D.

Career Stages of Researchers

Ph.D. Courses

6 years after Ph.D.

Mid career

Professor

Nobel Prize level

Postdoctoral Fellowships
(Standard)

1 - 2 years
400 Fellows /Year

Invitation fellowships
For Research in Japan

(Long-Term)
2 -10 months
About 70

(Short-Term)
14-60 Days
About 210

Award for
Eminent
Scientists

**Summer
Program**

2 months
About 110

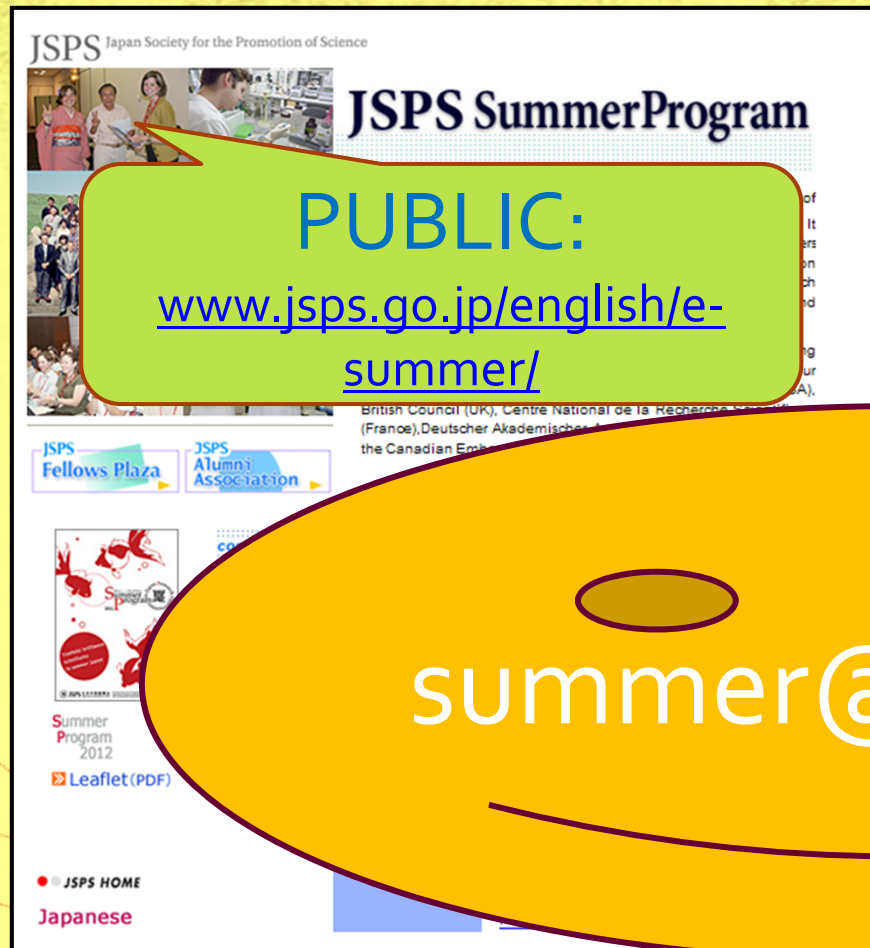
Postdoctoral
Fellowships
(Short-term)

1 – 12 months
About 150



Again, for details...

◆ Website:



summer@jsps.go.jp

Thank you very much.
ありがとうございます。

See you in Japan!
日本で会いましょう！

