

---

# JSPS



*Japan Society for the Promotion of Science*

**London Office**

***Takeshi Sekiguchi***

*Deputy Director  
of JSPS London office*

---

# *Index*



- 1 JSPS Overview**
  - 2 JSPS London Office**
  - 3 International Researcher Exchange**
  - 4 Experience Japan**
  - 5 Fellowships to Japan**
  - 6 Bilateral Programme**
  - 7 UK JSPS Alumni Association**
-

# *What is JSPS?*



- **Japan Society for the Promotion of Science** was established in 1932
- **Research funding agency for universities and research institutes**
- **Promote all fields of science including humanities and social sciences**
- **Largest funding agency in Japan**



## *Major Function of JSPS*

- **Funding research initiatives**

Competitive research funding: Grants-in-Aid

- **Fostering next generation of scientists**

Research fellowships for young scientists

- **Advancing international collaborations**

Collaborations with overseas partners

- **Promoting university reform**

Joint programmes with Ministry of Education and Science

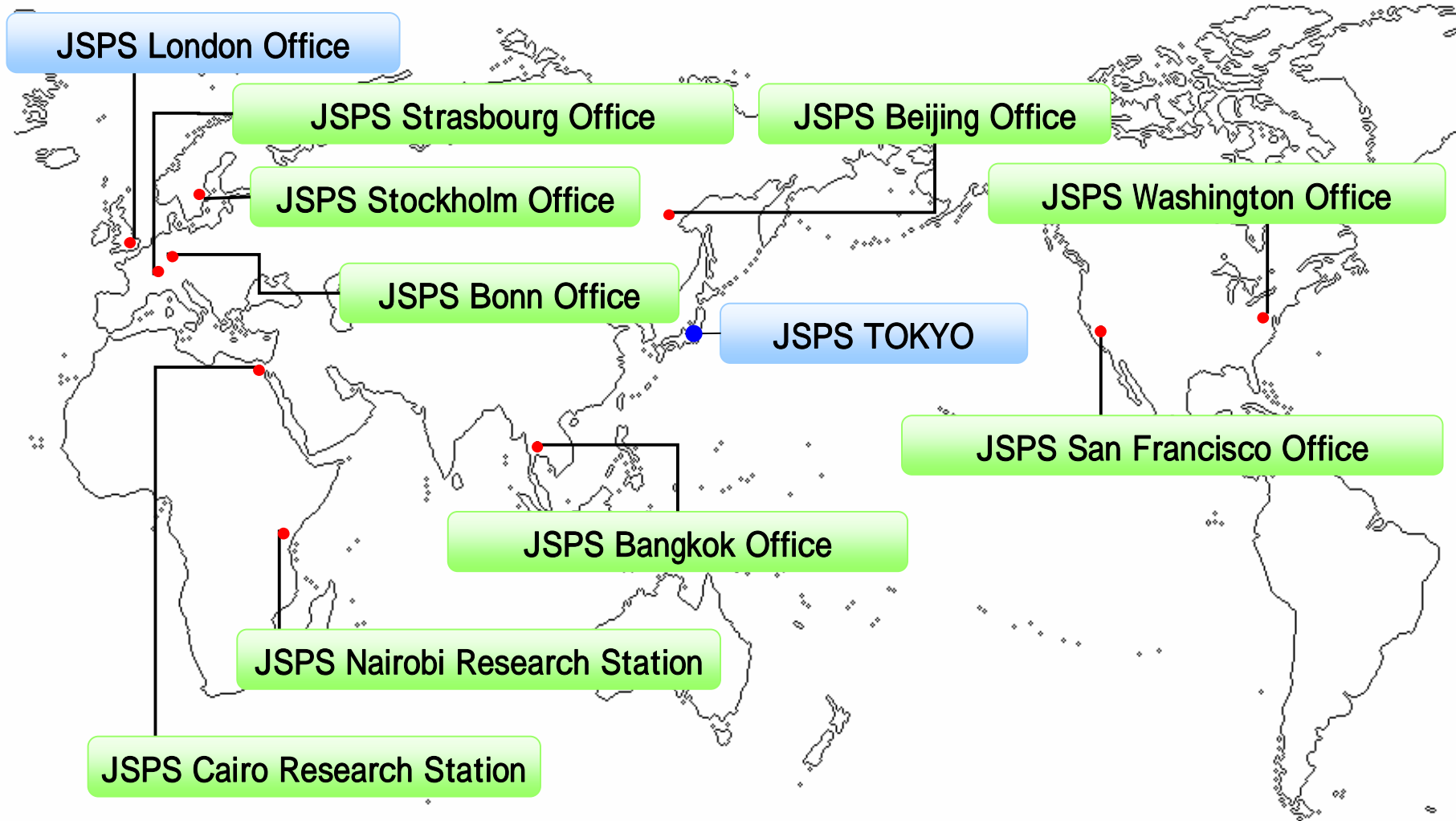


# *International Programmes*

- Unilateral Programs - Fellowship
    - ◆ From Japan
      - ◆ Postdoctoral Fellowships (for Japanese researchers)
    - ◆ To Japan
      - ◆ Summer Programme
      - ◆ JSPS Postdoctoral Fellowships (Short-term / Long-term)
      - ◆ JSPS Invitation (Short-term / Long-term)
      - ◆ JSPS Award for Eminent Scientists
  - Bilateral Programs based on MoU
    - ◆ Researcher Exchanges
    - ◆ Joint Research Projects
    - ◆ Joint Seminars
  - Multilateral Programme
    - JSPS Core-to-Core Programme
  - Frontiers of Science Symposia
  - New Initiatives
    - International Training Programme (ITP) for Young Researchers
-



# JSPS Overseas Office



# Members

Director

Prof Yuko FURUKAWA

Deputy Director

Mr Takeshi SEKIGUCHI

Advisor

Mr Kenichi ONO

International Programme Coordinator

Ms Polly WATSON

International Programme Associate

Mr Hiroshi YAMAGUCHI

International Programme Associate

Mr Hiroyuki SHIMA





## *Recent Events*

- “Japan: its tradition and hot topics in biological sciences“ focusing on **Stem Cell Biology, Single-Molecule Imaging** (The Royal Society and JSPS joint symposium to celebrate the publication of an issue of Philosophical Transactions B, on 16 June 2008)
  - “**Cadaveric Liver Transplantation and Living Donor Liver Transplantation**” (Joint Symposium with the University of Cambridge and Shinshu University, on 10 June 2008)
-

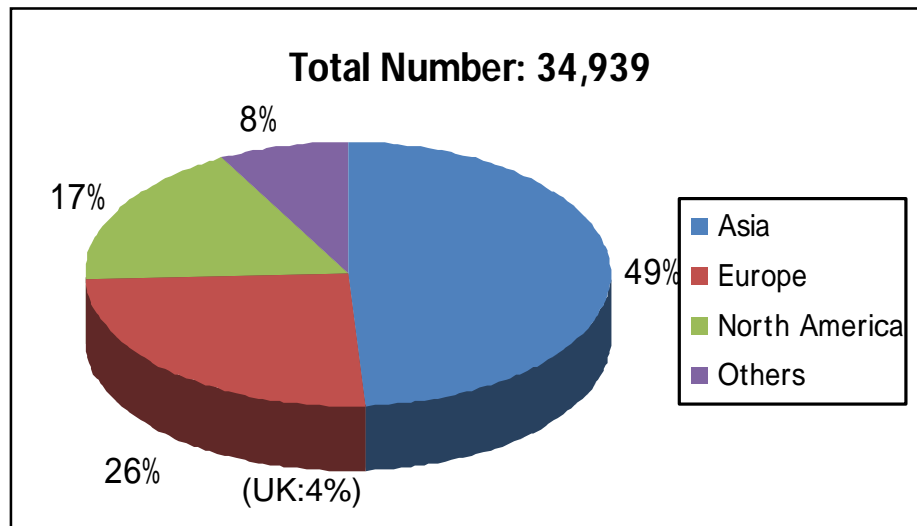


# International Researcher Exchange

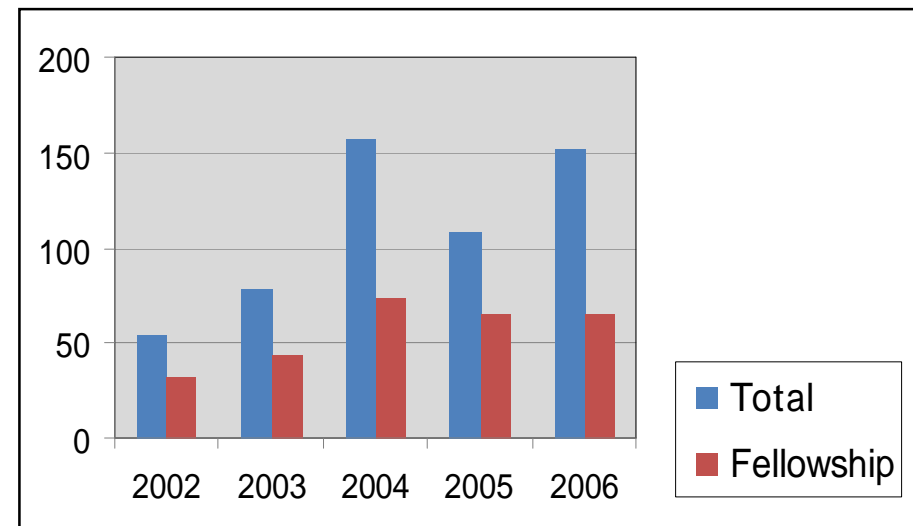


## ■ The Number of Foreign Researchers Invited to Japan

Total (FY2006)



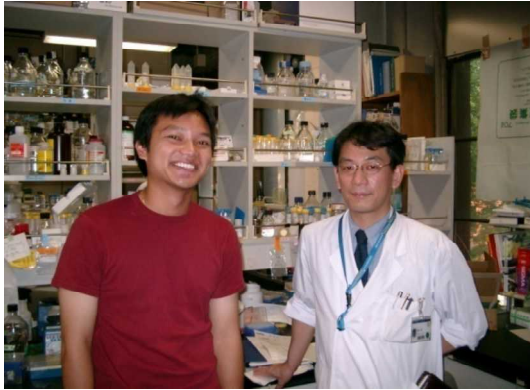
UK Researchers organised through JSPS





# *Experience Japan*

## Research



## Japanese



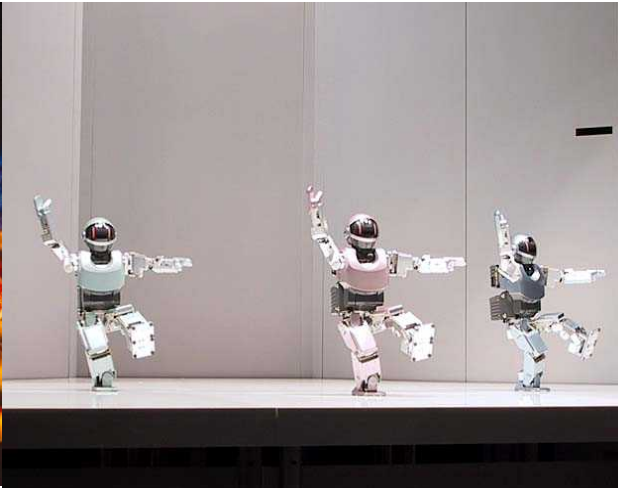
## Culture



## Homestay



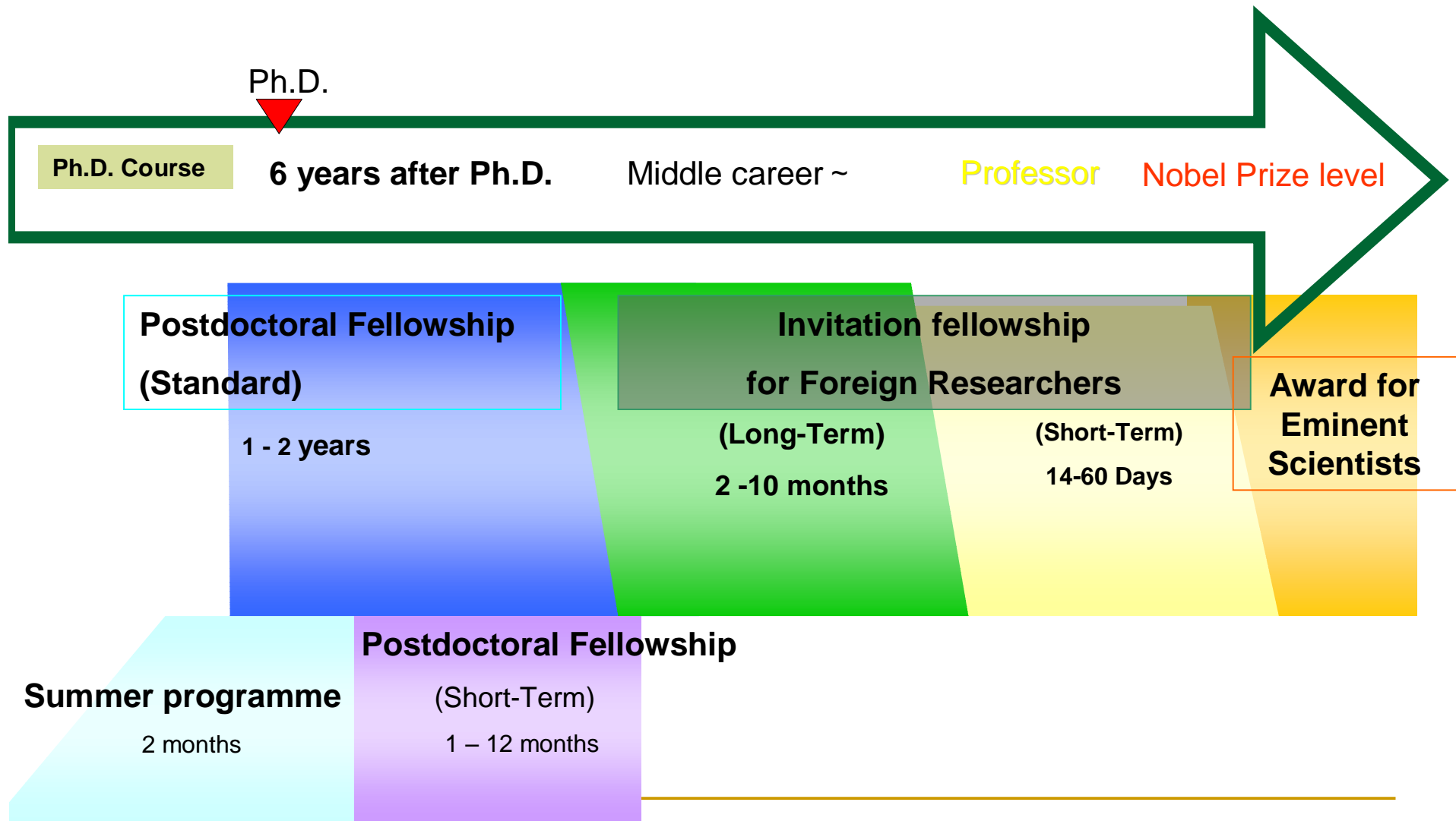
# 4. Experience Japan



## 5. Fellowships to Japan



# *Stages of research career*



## 5. Fellowships to Japan



# Fellowships Programmes

## Postdoctoral Fellowship Programme for Foreign Researchers

|                   | Long-term  | Short-term   |
|-------------------|--|--|
| <b>Target</b>     | <b>Post-doc (6 years after PhD)</b>  | <b>Pre/Post-doc</b><br><i>The US, Canada, EU, Switzerland, Norway</i>  |
| <b>Tenure</b>     | <b>1 -2 years</b>  | <b>1 -12 months</b>  |
| <b>Allowances</b> | <ul style="list-style-type: none"> <li>•Round-trip air ticket</li> <li>•Maintenance : ¥364,000/month</li> <li>•Domestic Travel: ¥58,500/year</li> <li>•Setting-in: ¥200,000</li> </ul> | <ul style="list-style-type: none"> <li>•Round-trip air ticket</li> <li>•Maintenance : ¥364,000/month</li> <li>• (¥200,000 for PhD students)</li> <li>•Domestic travel : ¥58,500/year</li> <li>•Setting-in: ¥200,000</li> </ul> |

## Invitation Fellowship Programme for Research in Japan

|                   | Long-term   | Short-term   |
|-------------------|---|--|
| <b>Target</b>     | <b>Mid-career to Professor</b>  | <b>Professor etc.</b>  |
| <b>Tenure</b>     | <b>61 days – 10 months</b>  | <b>14 – 60 days</b>  |
| <b>Allowances</b> | <ul style="list-style-type: none"> <li>•Round-trip air ticket</li> <li>•Maintenance: ¥369,000/month</li> <li>•Domestic travel : ¥10,000/year</li> <li>•Research expenses : ¥40,000</li> </ul> | <ul style="list-style-type: none"> <li>•Round-trip air ticket</li> <li>•¥18,000 /day (for maintenance)</li> <li>•¥150,000 (for domestic travel)</li> </ul> |



# *Joint Research Project*

|                 | Sciences<br>(except clinical medicine)   | Humanities or<br>Social Sciences   |
|-----------------|--|--|
| Where to apply? | <ul style="list-style-type: none"><li>· The Royal Society (UK researchers)</li><li>· JSPS Tokyo (Japanese researchers)</li></ul>   | <ul style="list-style-type: none"><li>· The British Academy (UK researchers)</li><li>· JSPS Tokyo (Japanese researchers)</li></ul> |
| Duration        | 1 – 2 Years  |  |
| Who can apply?  | <ul style="list-style-type: none"><li>· Post doctoral status or equivalent (project leader)</li><li>· Resident in the UK and employed by a UK academic institution</li></ul> |  |

---

# *Many other opportunities!*



- ❑ **The Royal Society**
- ❑ **The Research Councils**
- ❑ **The British Academy**
- ❑ **Daiwa Anglo-Japanese Foundation**
- ❑ **Sasakawa Foundation**
- ❑ **Japan Foundation**
- ❑ **Personal Contacts!**



# *UK JSPS Alumni Association*

- **Established in 2003**
- **Open to all former JSPS fellows**
- **Recent Activities**
  - Pre-Departure Seminar & Alumni Fellowship Evening (May 2005, June 2006 and Dec 2006)
  - Lecture and Debate:
    - “Film Screening of Sumo Do, Sumo Don’t (Shiko Funjatta)” (Sheffield, March 2007)
    - “Environmental Strategy based on Hybrid Technology” (at the House of Lords, September 2006)
    - “Natural Disasters and their Global Impact” (London, July 2005)
    - “Green Revolution in Africa” (Edinburgh, March 2006)

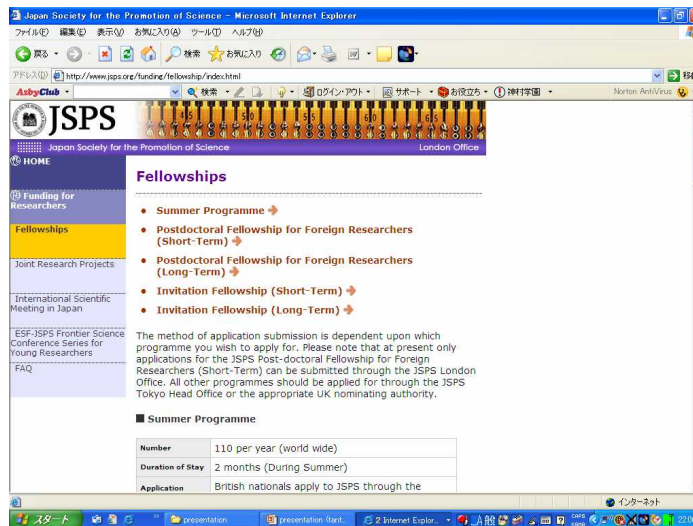




# JSPS website



## London Office



[www.jsps.org](http://www.jsps.org)

## Fellow Plaza



[www.jsps.go.jp/english/e-plaza/index.html](http://www.jsps.go.jp/english/e-plaza/index.html)



---

## *Contact Details*

- **JSPS Tokyo Headquarters:**

6 Ichibancho, Chiyoda-ku, Tokyo 102-8471

[www.jsps.go.jp/english/index.htm](http://www.jsps.go.jp/english/index.htm)

- **JSPS London Office:**

14 Stephenson Way, London NW4 2HD

Tel.:0207 255 4660 / Fax.:0207 255 4669

[www.jsps.org](http://www.jsps.org)

[enquire@jsps.org](mailto:enquire@jsps.org)

---