

Research Experience in Japanese and British Universities.

Andrew J. Quantock

*Structural Biophysics Group,
School of Optometry and Vision Sciences*

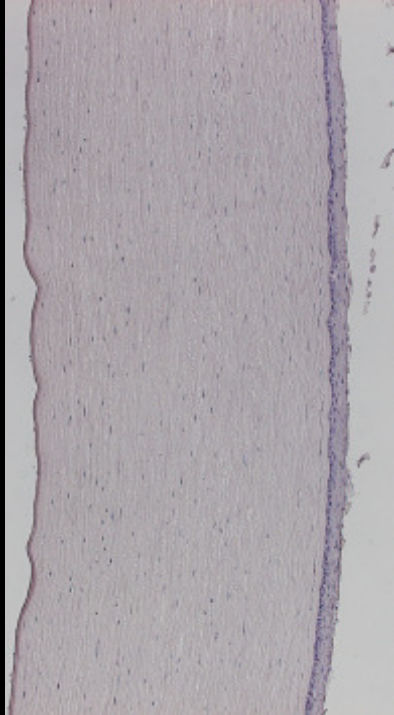


Collagen: primary constituent of cornea

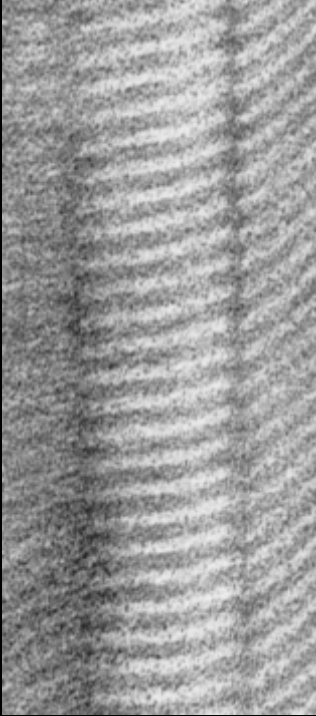
tissue



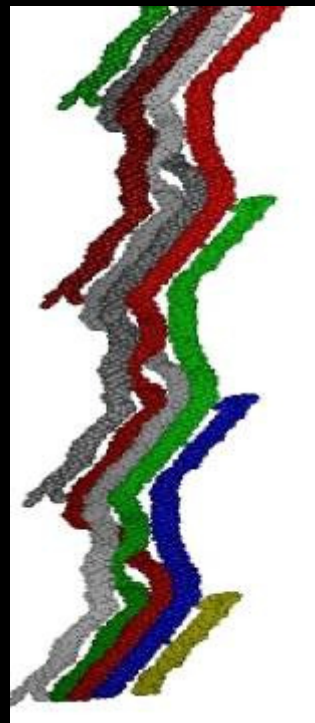
lamellar



fibrillar



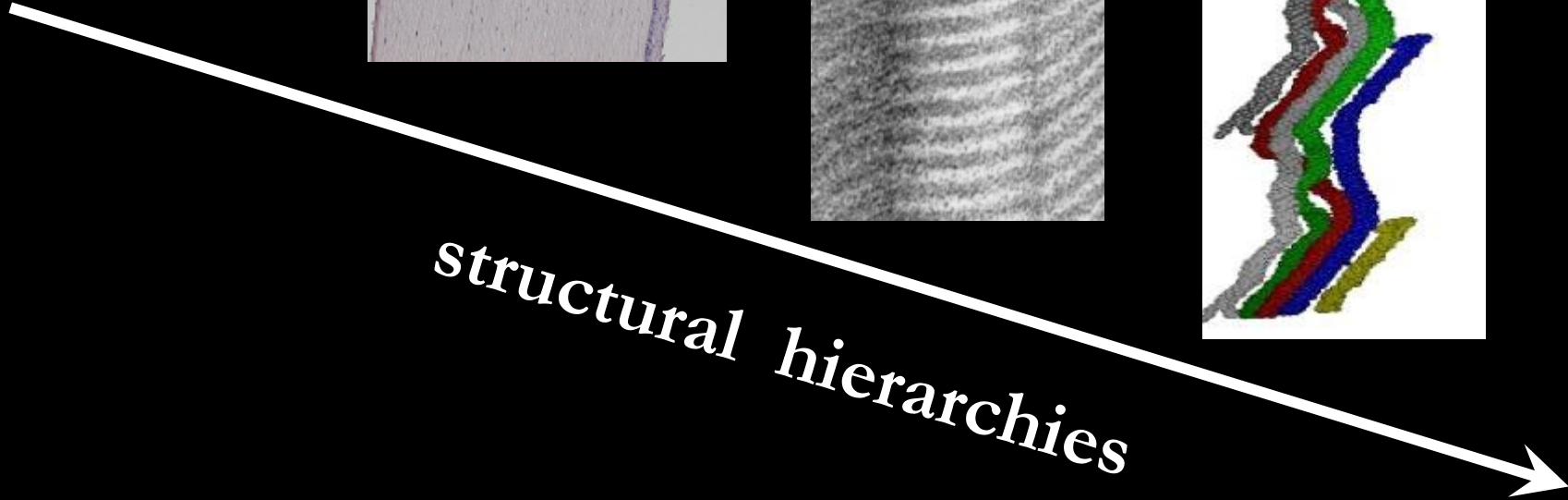
molecular



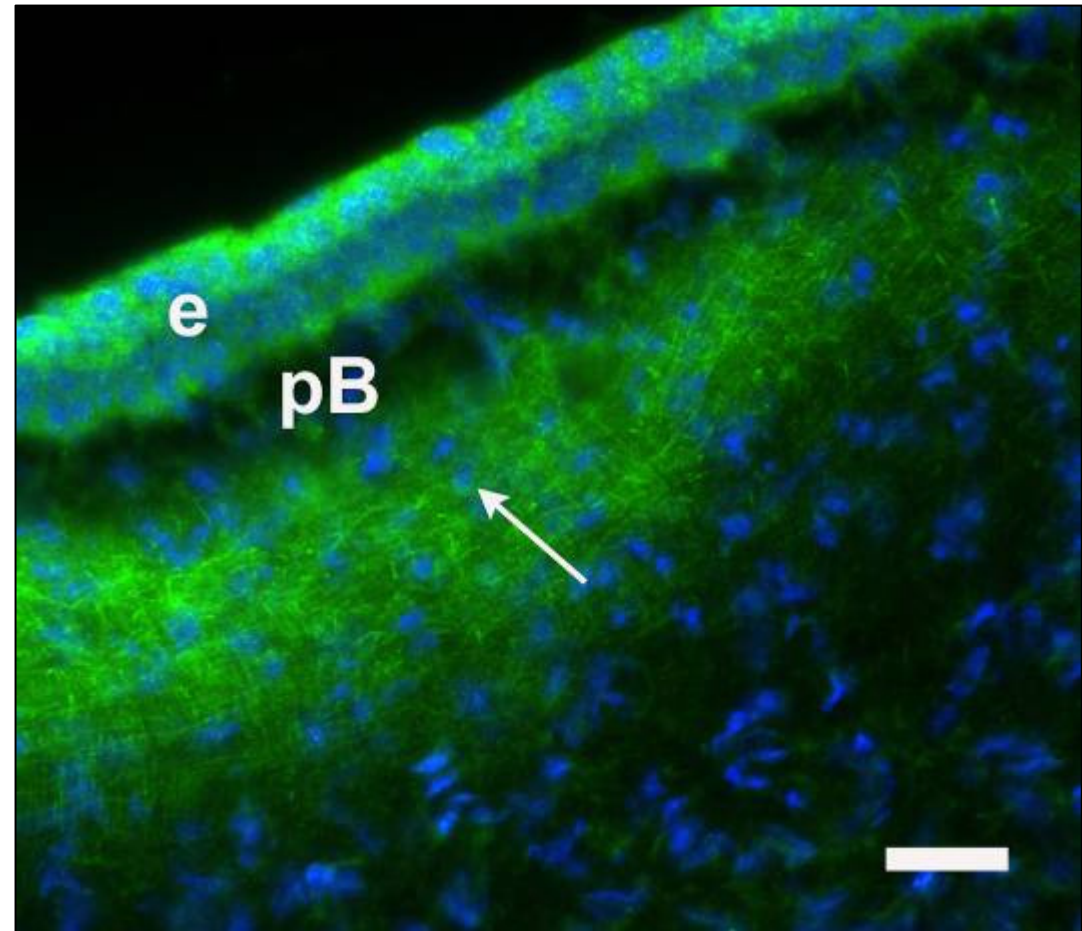
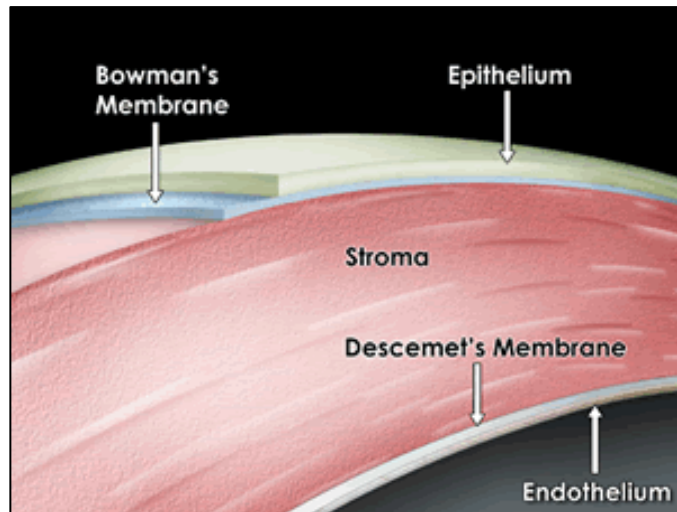
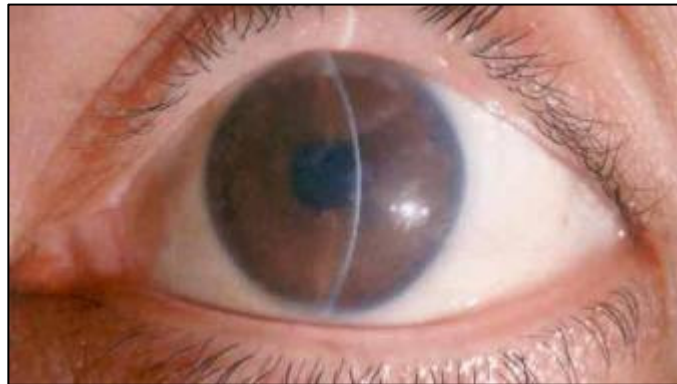
atomic



structural hierarchies



Research Area



The Cardiff-Kyoto JSPS Link



1996-1999



Shigeru Kinoshita

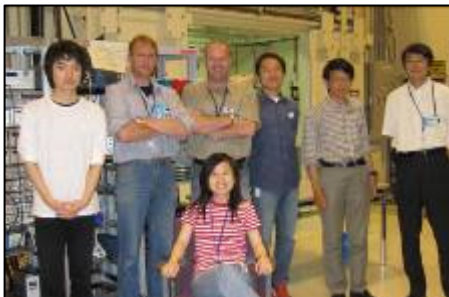
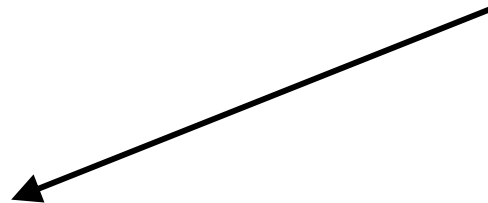
[Chairman, Dept of
Ophthalmology, Kyoto
Prefectural University of
Medicine]



**Che Cannon (JSPS
2002-2004)**



**Melody Liles
(JSPS 2004)**



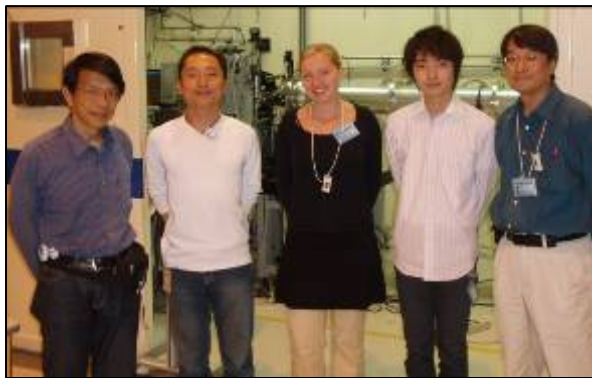
**Leona Ho
(JSPS 2009)**

Over 30 joint papers thus far ...



Yamasaki *et al.* ***Invest Ophthalmol Vis Sci*** 2008, in press; Saito *et al.* ***Br J Ophthalmol*** 2008;92:1434-1436; Quantock *et al.* ***J Appl Crystal*** 2007;40:335-340; Connon *et al.* ***PLoS ONE*** 2007;2: e1147; Connon *et al.* ***Cell Tissue Res*** 2006;323:177-182; Connon *et al.* ***Am J Ophthalmol*** 2006;141:190-192; Hayashida *et al.* ***Proc Natl Acad Sci U.S.A.*** 2006;103:13333-13338; Young *et al.* ***Br J Ophthalmol*** 2006;90:391-393; Connon *et al.* ***Acta Histochemica*** 2005;106:421-425; Young *et al.* ***Invest Ophthalmol Vis Sci*** 2005;46:1973-1978; Quantock *et al.* ***Acta Ophthalmologica*** 2005;83:462-466; Connon *et al.* ***J Histochem Cytochem*** 2004;52:415-418; Connon *et al.* ***Exp Eye Res*** 2004;78:909-915; Connon *et al.* ***Ophthalmic Res*** 2003;35:1-8; Quantock *et al.* ***Invest Ophthalmol Vis Sci*** 2003;44:1906-1911; Kinoshita *et al.* ***J Jap Ophthalmol Soc*** 2002;106:837-869; Kinoshita *et al.* ***Prog Ret Eye Res*** 2001;20:639-673; Sugita *et al.* ***Cornea*** 2001;20:362-365; Koizumi *et al.* ***Cornea*** 2000;19:65-71; Koizumi *et al.* ***Curr Eye Res*** 2000;20:173-178; Kinoshita *et al.* ***Cornea*** 2000;19:551-555; Koizumi *et al.* ***Invest Ophthalmol Vis Sci*** 2000;41:2506-2513; Kawasaki *et al.* ***Br J Ophthalmol*** 2000;85:1194-1197; Nishida *et al.* ***Am J Pathol*** 1999;154:331-336; Kawasaki *et al.* ***Am J Ophthalmol*** 1999;127:456-458; Dota *et al.* ***Exp Eye Res*** 1999;69:705-708; Quantock *et al.* ***J Refract Surg*** 1999;15:349-356; Nishida *et al.* ***Br J Ophthalmol*** 1999;83:1178-1182; Quantock *et al.* ***Biophys J*** 1998;74:995-998; Quantock *et al.* ***Cornea*** 1998;17:215-221; Okada *et al.* ***Am J Ophthalmol*** 1998;126: 535-542; Adachi *et al.* ***Br J Ophthalmol*** 1998;82:1445-1446; Dota *et al.* ***Am J Ophthalmol*** 1998;126:832-833; Nishida *et al.* ***Am J Hum Genet*** 1997;61:1268-1275.

Utilising the synchrotron at SPring-8



Rob Young, Craig Boote, Sally Hayes, Barbara Palka

Justyn Regini, Naoto Yagi: **The Story of a Squid Lens Structure Study.**



Collaborations with peers who progress

Professor Kohji Nishida, Chairman, Department of Ophthalmology, Tohoku University, Sendai.



**Dr Noriko Koizumi,
Director, Centre for
Regenerative Medicine,
Doshisha University,
Kyoto**

The Cardiff-Kyoto JSPS Link

