



JSPS

Japan Society for the Promotion of Science

Takeshi SEGUCHI

Deputy Director of JSPS London

27th May 2010

Outline

- JSPS/JSPS London Overview
- JSPS supports
- UK-JSPS Alumni Association
- Research Opportunities

Major Functions of JSPS

Established in 1932

Largest Funding Agency in Japan covering all fields of sciences

- **Funding research initiatives**

Competitive research funding: Grants-in-Aid

- **Fostering next generation of scientists**

Research fellowships for young scientists

- **Advancing international collaborations**

Collaborations with overseas partners

- **Promoting university reform**

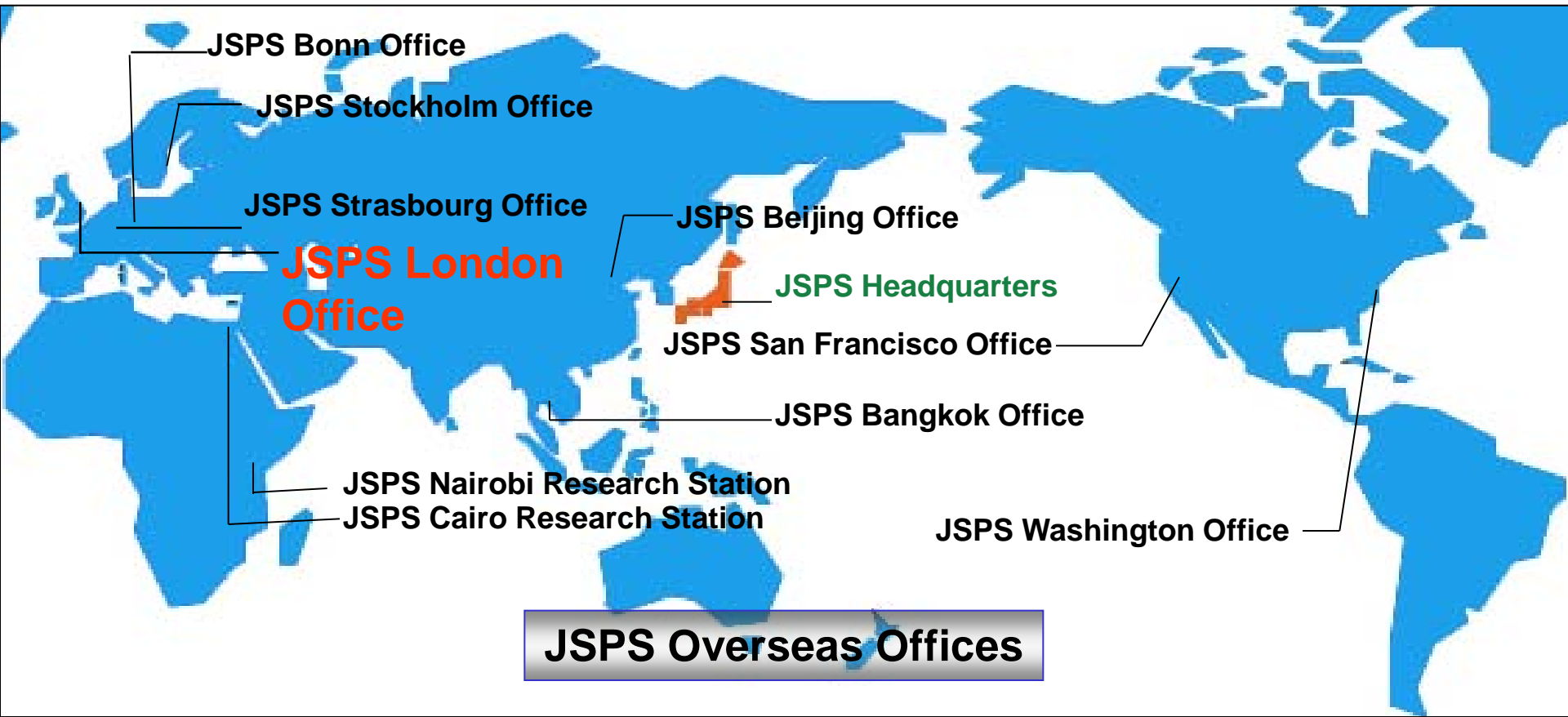
Joint programmes with MEXT

JSPS London -strengthen Japan-UK academic linkages -

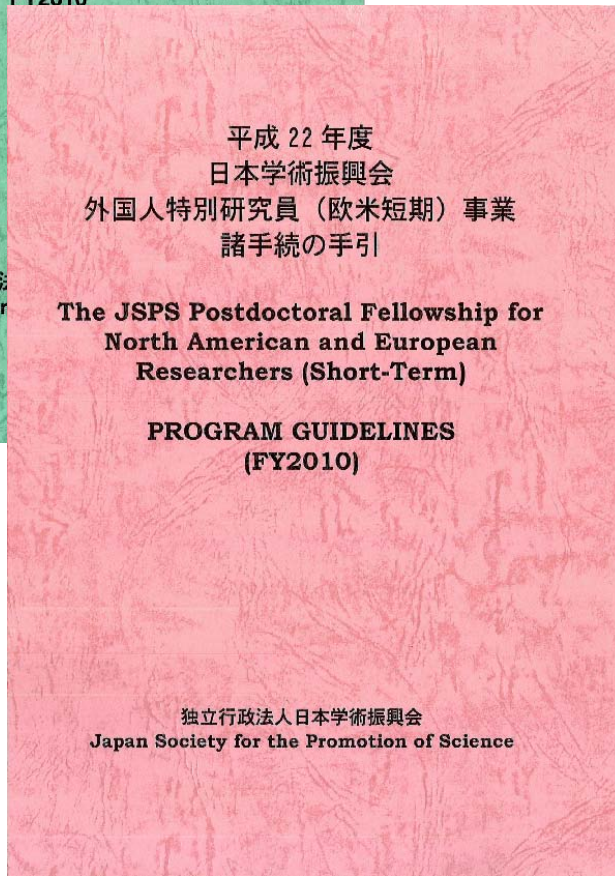
Establishd in 1994

14 Stephenson Way, London NW1 2HD

8 Staff Members



JSPS Postdoctoral Fellowship Programme Guidelines



-These booklet provide the details of the terms, conditions, and procedure of this fellowship.

-These are very important for both you and your host researcher.

JSPS Fellows Plaza -Supports-

http://www.jsps.go.jp/english/e-plaza/index.html

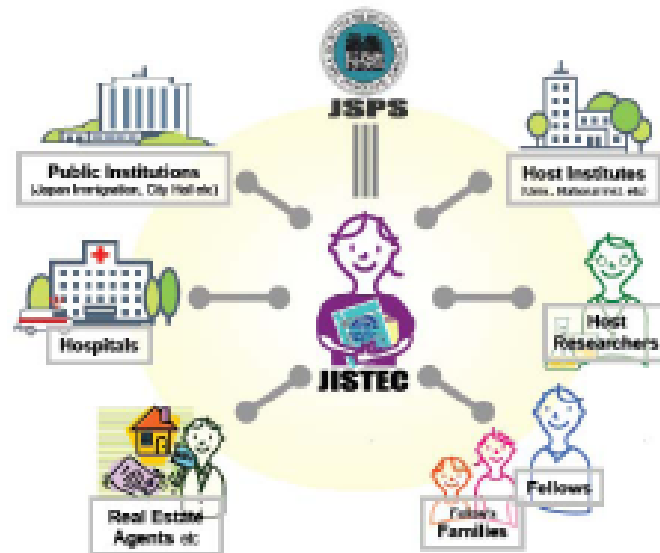
The screenshot shows the JSPS Fellows Plaza website in a Microsoft Internet Explorer browser window. The browser title is "JSPS - JSPS Fellows Plaza - Microsoft Internet Explorer". The address bar shows "http://www.jsps.go.jp/english/e-plaza/index.html". The website header includes the JSPS logo (Japan Society for the Promotion of Science) and navigation links for Home, Search, Useful Links, Site Map, and a menu. The main content area features a large banner for "JSPS Fellows Plaza" with the text "JSPS Fellows Plaza supports JSPS Fellows during their stays in Japan. The staff offers Fellows information on both living and doing research in Japan." Below the banner, there are sections for "Publications" (including JSPS Quarterly and Life in Japan for Foreign Researchers 2008-2009), "Present Fellows" (with links for Daily Living Support, e-Orientation, Find Nearby Fellows, Science Dialogue, Program Guidelines, and General Inquiries), "Past Fellows" (with links for Alumni Associations and Re-Invitation BRIDGE Fellowship), and "Prospective fellows" (with links for How to Apply, Experiences and Messages from JSPS Fellows, Research and Life in Japan by JSPS Fellows, and Messages from Former JSPS Fellows). There are also links for "How to find us", "JSPS Overseas Offices", "LIFE IN JAPAN TEI INC", "JISTEC Japan Life in Japan HOME PAGE", and "Science Dialogue Program". The status bar at the bottom indicates "ページが表示されました" and "インターネット".

- Supports fellow's stays in Japan (JISTEC / TEI)
- Offers information on both living and doing research in Japan
- Orientation (in Tokyo)
- Issues "JSPS Quarterly"
- Publishes "Life In Japan"

JSPS Fellows Plaza -Supports-

OJISTEC (for Short Term fellows)

http://www.jistec.or.jp/Fellow/fellow_overview_e.html



For information, contact

Japan International Science and Technology Exchange Center (JISTEC)

2-20-5, Takezono, Tsukuba, Ibaraki 305-0032

Phone: +81-29-853-8250 Fax: +81-29-853-8260

e-mail: fellow@jistec.or.jp

Opening hours: Mon. through Fri. 9:00-12:00 13:00-17:00

(English and Chinese speakers will be available.)

OTEI (for Standard fellows)

<http://www.life-in-japan.net/>

Science Dialogue -Lectures at High Schools-

10 Dec 2008, Miyazaki,

Miyazaki Kita High School

Dr. M. KRIENER (Germany)



About Germany, me, and physics



10 Dec 2008, Aichi,

Aichi Zuiryo High School

Dr. B. J. RIPLEY (U.K.)



The Science of Green Tea



28 Jan 2009, Gifu,

Ena High School

Dr. DJEMETIO, A. (Cameroon)



*Sustainable Management of wetland ecosystem
for Human Well-being and ecological Balance*



Japanese Language Textbook -Minna no Nihongo-



Available through Amazon:

<http://www.amazon.co.uk/Minna-no-Nihongo/Im/2F99EM018KBX7>

UK-JSPS Alumni Association

- Established in 2003
- Open to all former JSPS fellows (over 250 members)

Useful Scheme for members

~Expanding UK – Japan Academic Linkage~

① Opportunities to revisit Japan for research

★ FURUSATO Award (2008-)

(for short-term visit) Offers an amount up to £2,000

★ BRIDGE Fellowship (2009-)

(14 – 45days visit) Fellowship worth about £7,000

② Opportunities to organise UK-Japan symposia

★ FURUKAWA ALUMNI (now preparing)

- International travel cost : Up to 5 Japanese speakers

- Up to 1,500 for the cost of venue, hospitalities etc..

More Research Opportunities -Fellowships-



Career Stages of Researchers

Post Graduate.

Ph. D.

6 years after Ph.D.

Mid career

Professor

Nobel Prize level

Postdoctoral Fellowship (Standard)

(1-2 years)

Invitation Fellowship (Long term)

(61 days- 11 months)

Fellowship (Short term)

(14-60 days)

Award for Eminent Scientists

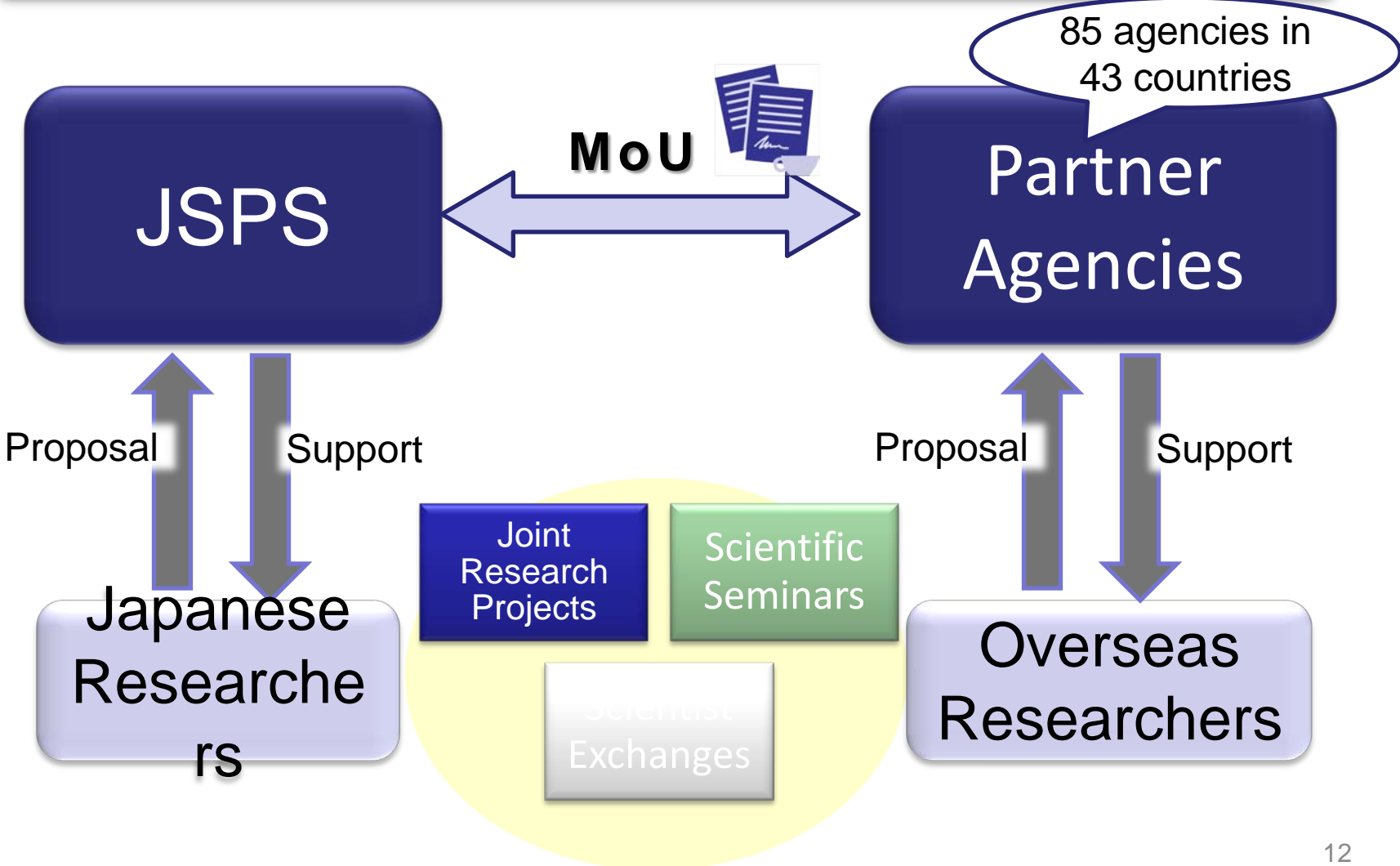
Summer Program (2 months during summer)

Postdoctoral Fellowship (Short-term)






(1-12 months)

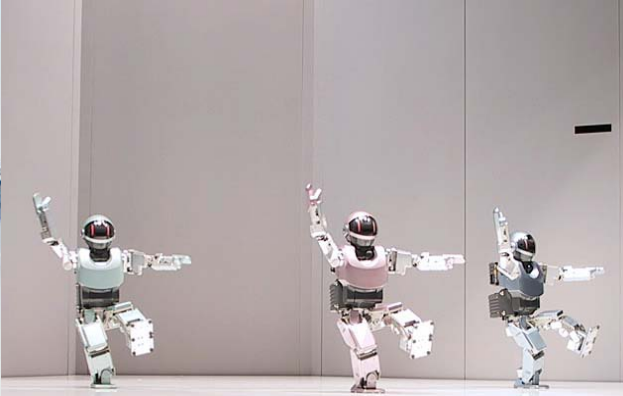
International Collaboration - Group to Group -

Bilateral Cooperation Based on MoUs



UK Partner Agencies

UK Counterpart Institutions	Collaborative Programmes	Year of Agreement
	<ul style="list-style-type: none">▪ Joint Research Projects▪ JSPS Postdoctoral Fellowships	1971
	<ul style="list-style-type: none">▪ Joint Research Projects▪ JSPS Postdoctoral Fellowships	1973
	<ul style="list-style-type: none">▪ JSPS Summer Program Fellowships	2004
	<ul style="list-style-type: none">▪ Core to Core Programme	2008
	<ul style="list-style-type: none">▪ Joint Seminars	TBC



Contact Details

If you have any questions, regarding today's presentation or our program,

Please feel free to email to ...

enquire@jsps.org

Thank you for your attention