

Research environment in Japanese and UK institutions

Dr. Mark Tame

m.tame@imperial.ac.uk

m.tame@qub.ac.uk



Research in Japan?

- Well-equipped and well-funded research environment
- World-leading research groups
- Stability in funding, planning and implementation
- Produces high-quality research
- High-level of research and development (R&D)
- Different way of thinking, ideas and working
- Establish new collaborations and build network
- Different culture and lifestyle



Universities

Category	Number of Universities	Number with Graduate Schools
National university corporations	87	86
Public universities	89	76
Private universities	580	436
University of the Air	1	1
Total	757	599



Osaka University



Graduate School of Engineering Science

Research Environment

Professor Nobuyuki Imoto

Associate Professor Masato Koashi

Research Associate Takashi Yamamoto



JSPS Postdoc Me!

Research Associate Sahin Ozdemir

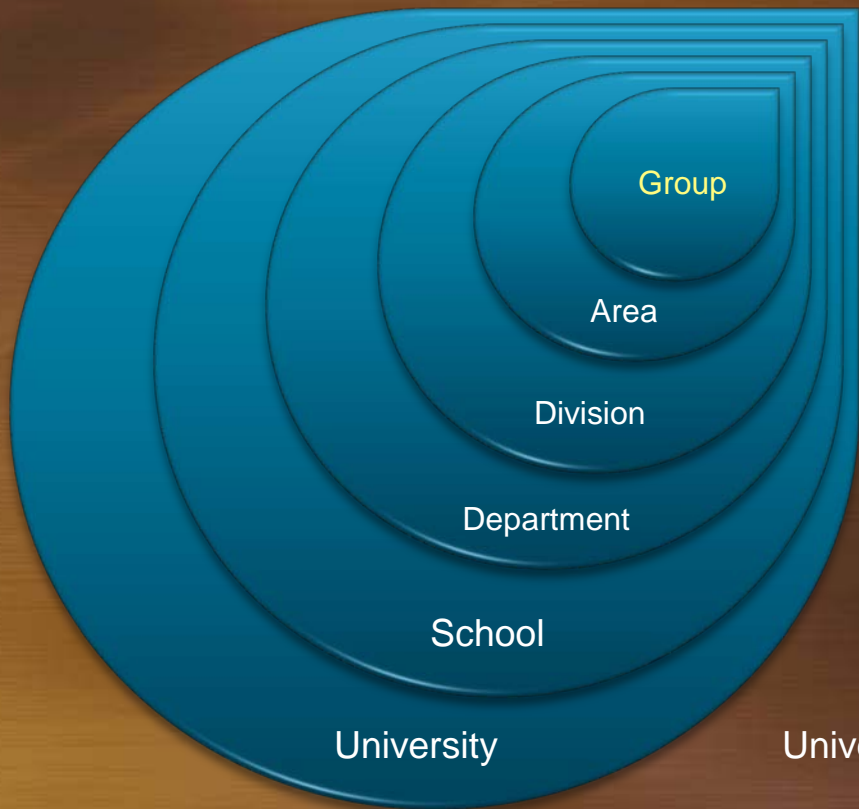
NTT PhD Student Yuuki Tokunaga

PhD Student Toshiyuki Tashima

Secretary Arimoto Sachiko

Msc Student Fatih Ozaydin

Research Environment



Quantum Information and Quantum Optics Group

Quantum Physics of Nanoscale Materials

Materials Physics

Department of Materials Engineering Science

Graduate School of Engineering Science

University of Osaka

Research Environment

CREST Network meeting - Hokkaido



Hokkaido University (Takeuchi group), Osaka University (Imoto group), Hiroshima University (Kadoya group)

Outside University



Outside University



Challenges



Umeda-Osaka train station, Osaka

- Emergency numbers:
Police 110
Ambulance (kyukyu) or Fire (kaji) 119
- Mobile phones
- Money
- Navigation

- Language:



JSPS Book 'Life in Japan for Foreign Researchers 2008-2009':
www.jsps.go.jp/english/e-plaza

Life in Japan:
www.life-in-japan.net/en



Challenges



- Language (survival set)

Hai – Yes

Iie – No

Konnichiwa – Hello

Sayonara - Goodbye

Sumimasen – Excuse me

Gomennasai - Sorry

Onegai shimasu - Please (request)

Dozo - Please (offer)

(Domo) arigato – Thank you

Eigo o hanasemasu ka – Do you speak English?

Wakarimasen – I don't understand

Kore o kudasai – I would like this

Kore wa ikura desu ka? – How much is this?

Toire wa doko desu ka – Where is the toilet?

Tasukete! – Help!

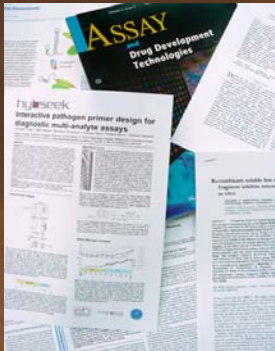
Ohayo gozaimasu – Good morning

Konbanwa – Good evening



Numbers and Directions

Future Collaboration



- Joint papers/articles
- Travel
- Conferences (organise, attend & be invited)
- Funding opportunity – UK/Japan
- Gain confidence - opinion and help
- Gives new perspective on international researchers in UK
- CV – independent research and motivation
- Build network
- Future job in Japan!



JSPS Alumni Association

JSPS Alumni Association

The screenshot shows the JSPS Alumni Association website. The top navigation bar includes 'JSPS London' and 'UK-JSPS Alumni Association'. A left sidebar contains a navigation menu with categories like 'About Us', 'Training', 'Programs for Returning Alumni', and 'Member Services'. The main content area features a 'What's New' section with a list of recent news items, each with a date and a brief description. Below this is an 'Alumni Members' Activities' section with a list of articles or posts, each with a date and a title. The website footer includes the JSPS logo and contact information.

- Maintain and create new academic links with Japan
- Events/Alumni evenings - meet interesting people and find out about new experiences in Japan
- Further funding opportunities
- Strengthening UK's connections with Japan
- Provide guidance to new fellows and support Japanese researchers in UK

Research environment in Japanese and UK institutions

Dr. Mark Tame

m.tame@imperial.ac.uk

m.tame@qub.ac.uk

