



JSPS

(Japan Society for the Promotion of Science)

-Japan's Research Funding Agency-

Hideyuki MATSUMOTO

**Deputy Director
JSPS London**

24 April 2014

Introduction of JSPS

Japan **S**ociety for the **P**romotion of **S**cience

日本学術振興会

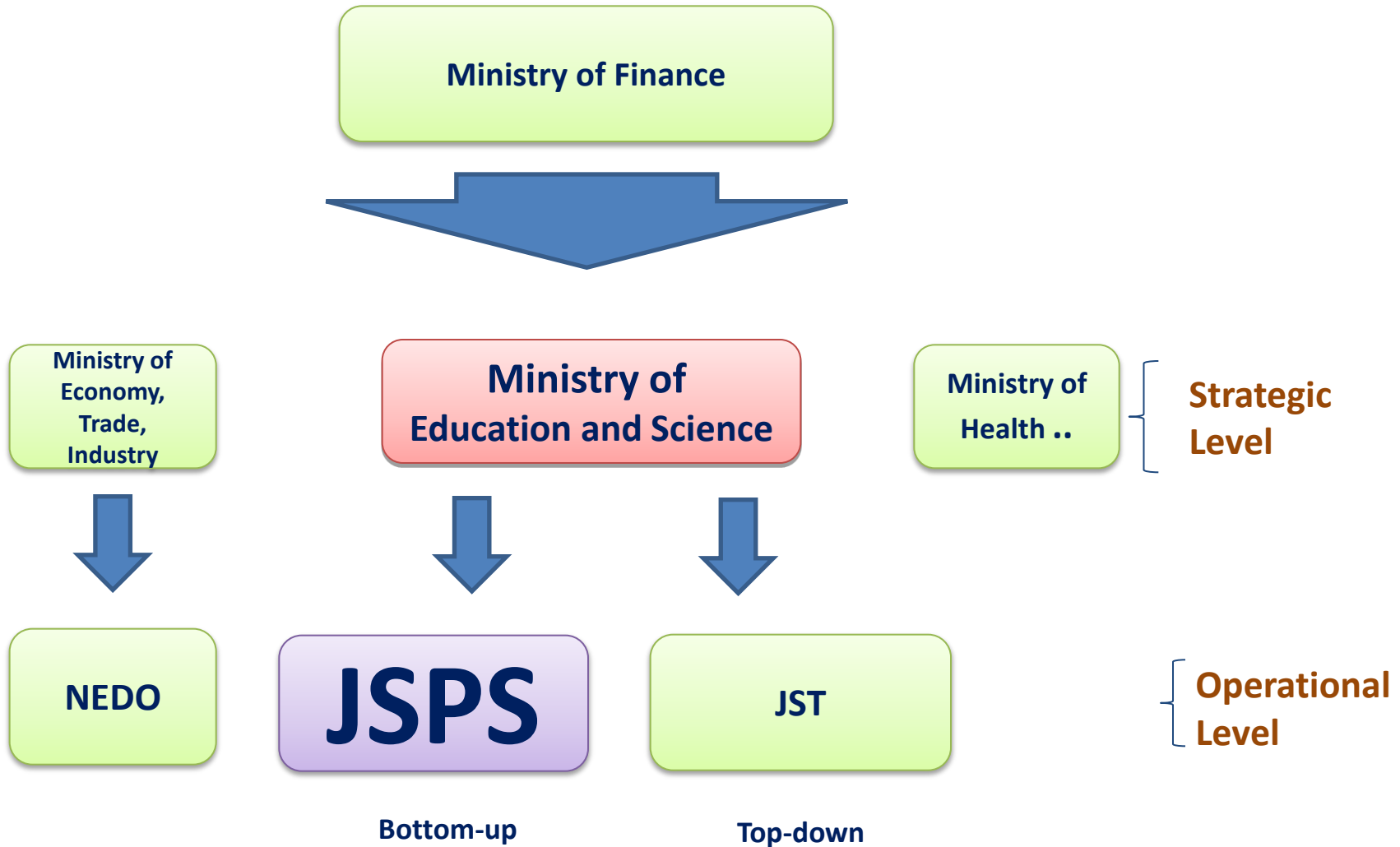
- Established through an endowment by Emperor Showa in 1932



Rooster:
Harbinger of new knowledge that
promises a brilliant future for
humankind.



Who we are



Japan **S**ociety for the **P**romotion of **S**cience

- **Support for research initiatives**

Competitive research funding: Grants-in-Aid

- **Fostering next generation of researchers**

Research fellowships for young scientists

- **International collaborations**

Collaborations with overseas partners

- **Support for university reform**

Joint programs with Ministry of Education and Science

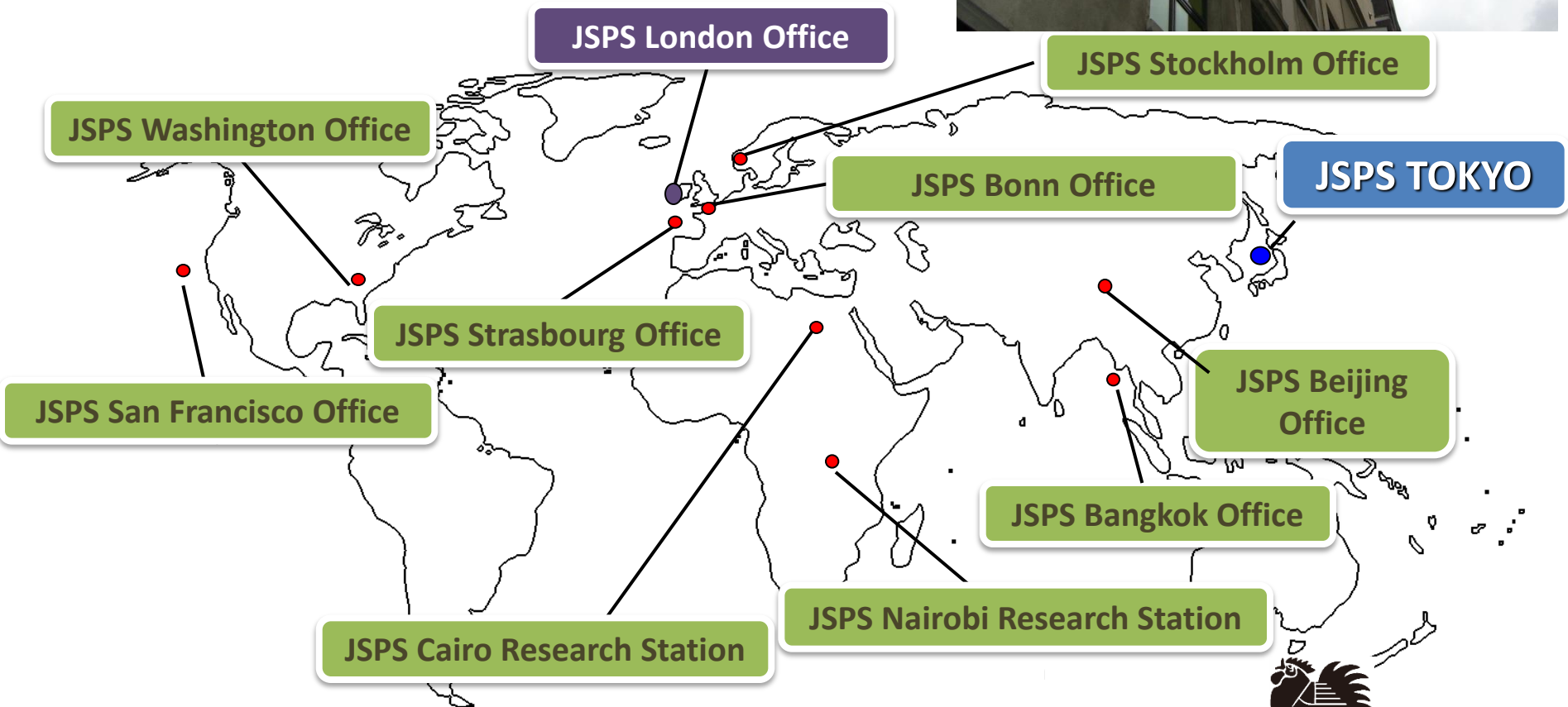


JSPS London

Established in 1994

8 Staff Members

Strengthen Japan-UK academic linkages



JSPS fellowships

日本学術振興会 外国人特別研究員事業
諸手続の手引

The JSPS Postdoctoral Fellowship
For Foreign Researchers





PROGRAM GUIDELINES

独立行政法人日本学術振興会
Japan Society for the Promotion of Science



Support for JSPS Fellows

※1 GBP = 170 JPY

	Research Grant	Insurance	Japanese Lesson	others
Postdoctoral Fellowship (SHORT TERM)	¥81,000 (About £480) × The number of months of tenure		N/A	
Postdoctoral Fellowship (STANDARD)	KAKENHI Lab-based subjects: ¥1.2 million (About £7,000) General subjects: ¥0.8 million (About £4,700) Special subjects: ¥1.5 million (About £8,800)		Support from JSPS: 50,000 JPY or less (About £290) ※1. Fellows who will stay in Japan for the first time. 2. Fellows who have stayed in Japan less than 12 months before.	Science Dialogue Program
Invitation Fellowship (Long term)	Domestic Research Trip Allowance 100,000 yen (fixed amount) (About £590) Research Allowance 40,000 yen (fixed amount) (About £230)		N/A	
Invitation Fellowship (Short term)	Domestic Research Trip Allowance 150,000 yen (fixed amount) (About £880)		N/A	

Science Dialogue



5 Feb 2013,
Wakasa High School, Kyoto
Dr. Nicholas GOWER (UK)
Catalysts in synthetic chemistry



Brochure '14-'15

JSPS science dialogue

Search



JSPS London

VISA

Applying for a visa is your personal responsibility!

	Summer Program	Postdoc Fellowship (Short-term)	Postdoc Fellowship (Standard)	Invitation Fellowship (Short-term)	Invitation Fellowship (Long-term)
Application	Not required	90 days or less: Not required	Required	Not required	90 days or less: Not required
		91 days or more: Required			91 days or more: Required
Status	-	"Researcher" "Professor"	"Researcher" "Professor"	-	"Cultural activities" "Researcher" "Professor"



Visa Section at Japanese Embassy, London

- E- mail: visa@ld.mofa.go.jp
- Tel: 020 7465 6550



Residents Card

- New residency management system (from 9 July 2012)
 - Fellows who will stay in Japan for 3 months or longer
 - ✓ **A resident card will be issued at the airport.**
 - ✓ **You must bring the card to a municipal office and notify it of your address within 14 days.**
 - ✓ **Re-entry permit from the immigration bureau is not required if you leave Japan and will return within 1 year.**

Immigration Bureau of Japan

http://www.immi-moj.go.jp/newimmiact_1/en/index.html



National Pension

- **Not required to enroll in the Japanese National Pension System if your stay in Japan is less than 5 years.**
- **Fellows from the UK should continue their enrollment in the British Pension System.**

HM Revenue & Customs

<http://www.hmrc.gov.uk/nic/japan.htm>



National Health Insurance

- Fellows who will stay in Japan for 1 year or longer are obliged to join the national health insurance program.
- Application for enrollment in the program is made at the national health insurance section of your local municipal office.
- Allowances under the fellowship \neq Salary



Preparation for Earthquakes

- Actions to ensure

e.g.

- (1) Protecting yourself

- (2) Taking refuge

- Provide information in advance to your host researcher and institution on how to contact you in case of an emergency.



Thank you.

Hideyuki Matsumoto, Deputy Director
Japan Society for the Promotion of Science (JSPS)
14 Stephenson Way, London, NW1 2HD, United Kingdom

+44 (0)20 7255 4660 enquire@jpsps.org

JSPS Tokyo:

Postdoctoral Fellowship: gaitoku@jpsps.go.jp

Invitation Fellowship: gaitoku-suisen@jpsps.go.jp

 Find us on
Facebook



JSPS London