



Lost in Translation?
Not if you practice your kanji...

Dr Zenobia Lewis

University of Liverpool

Department of Evolution, Ecology and Behaviour

Z.Lewis@Liverpool.ac.uk

Male moths reduce sperm investment in relatives

Zenobia Lewis¹, Nina Wedell*

Sex starved: do resource-limited males ensure fertilization success at the expense of precopulatory mating success?

Zenobia Lewis*, Hiroko Sasaki¹, Takahisa Miyatake¹

EVIDENCE FOR STRONG INTRALOCUS SEXUAL CONFLICT IN THE INDIAN MEAL MOTH, *PLODIA INTERPUNCTELLA*

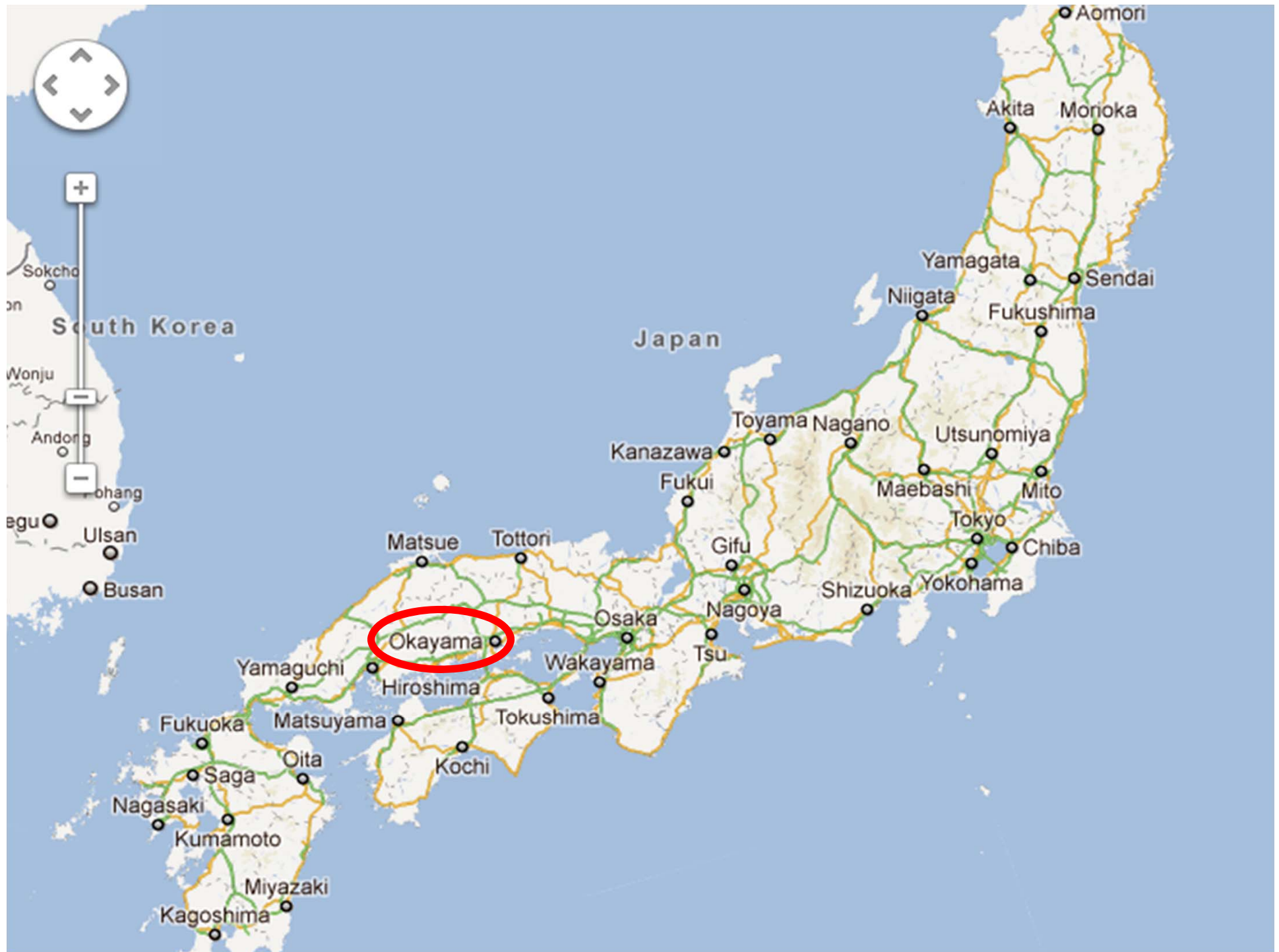
Zenobia Lewis,¹ Nina Wedell,¹ and John Hunt^{1,2}

***Wolbachia* infection lowers fertile sperm transfer in a moth**

Z. Lewis¹, F. E. Champion de Crespigny¹, S. M. Sait², T. Tregenza¹ and N. Wedell^{1,*}

Perception of male–male competition influences *Drosophila* copulation behaviour even in species where females rarely remate

Anne Lizé, Rowan J. Doff, Eve A. Smaller, Zenobia Lewis and Gregory D. D. Hurst

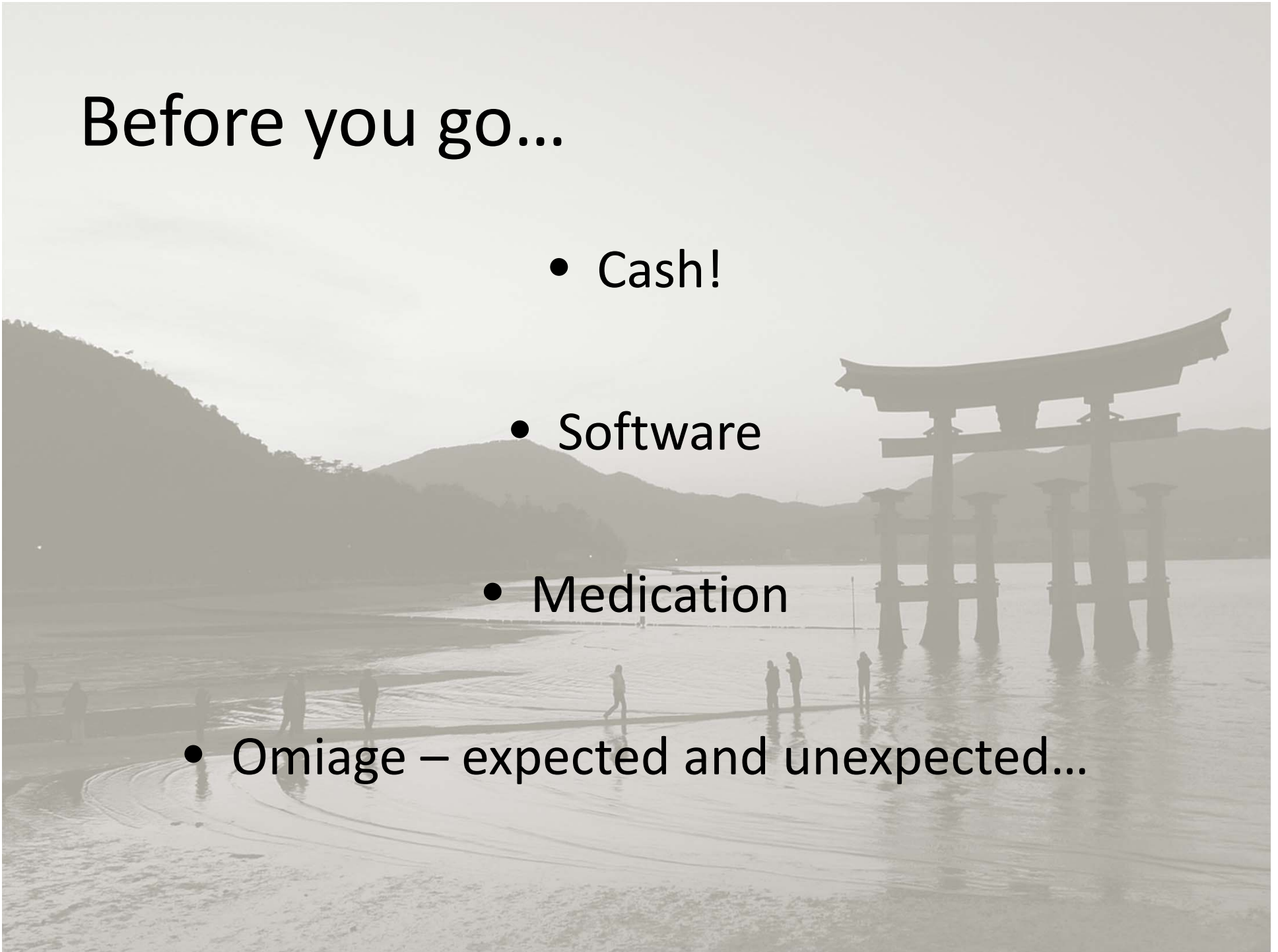


Okayama



Before you go...

- Cash!
- Software
- Medication
- Omiage – expected and unexpected...



When you get there...

- Accommodation
- Banking
- Communication
- Administration



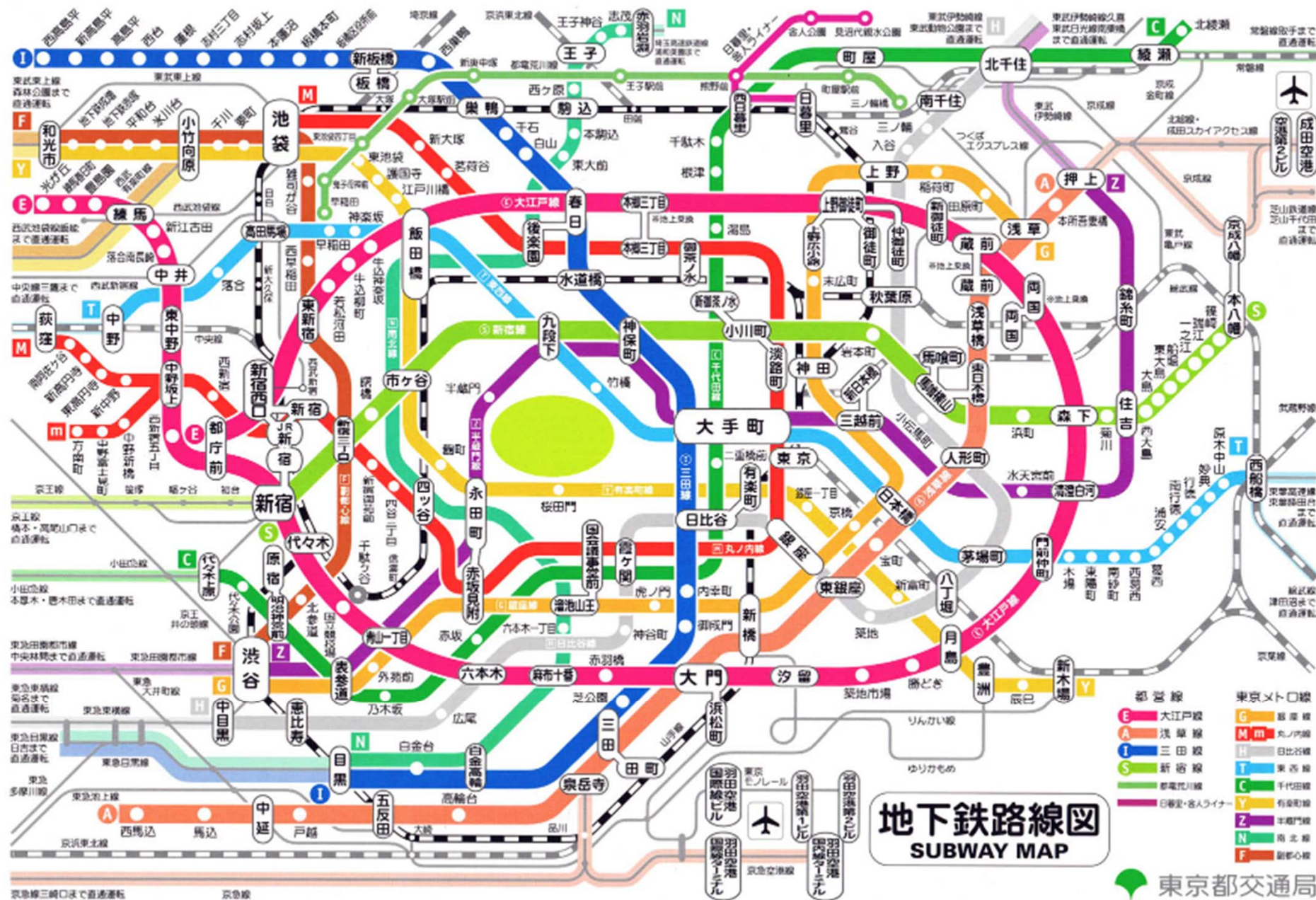


しんニライめ	600
ゴヤちゃんぷる	500
豆腐ちゃんぷる	400
海ぶどう	400
もずく	300
スワガラス豆腐	300
島豆腐	200
ごはん	100

石護さくら祭り
4/28土~1/29日
4/28土~2/18土

紅酒の
とろふよう
300円

11月より営業時間
変更しました
11時~午後11時
土日 休み











Dr LEWIS Zenobia

ルイス ゼノビア

日本学術振興会 JSPS 外国人特別研究員

〒700-8530 岡山市津島中 1-1-1

Tel: 086-251-7052

Email: zen.lewis@gmail.com

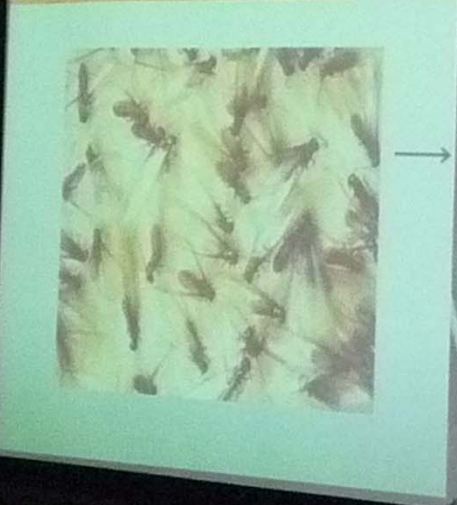
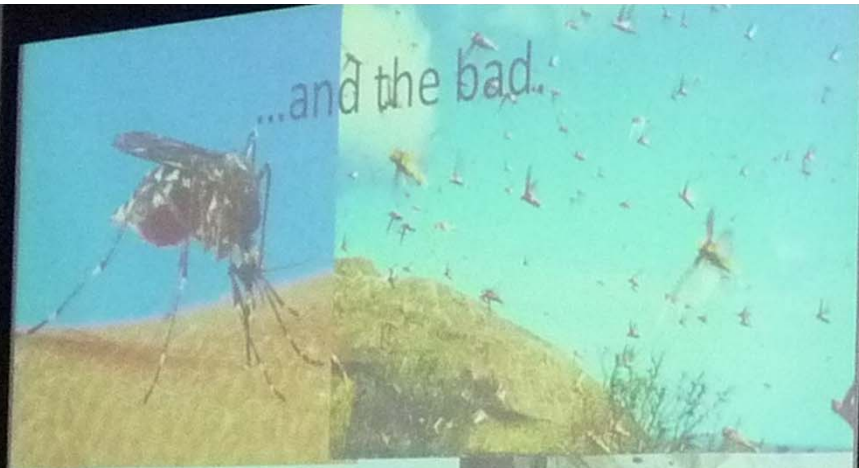


第56回 日本生体学会大会

山本 結花

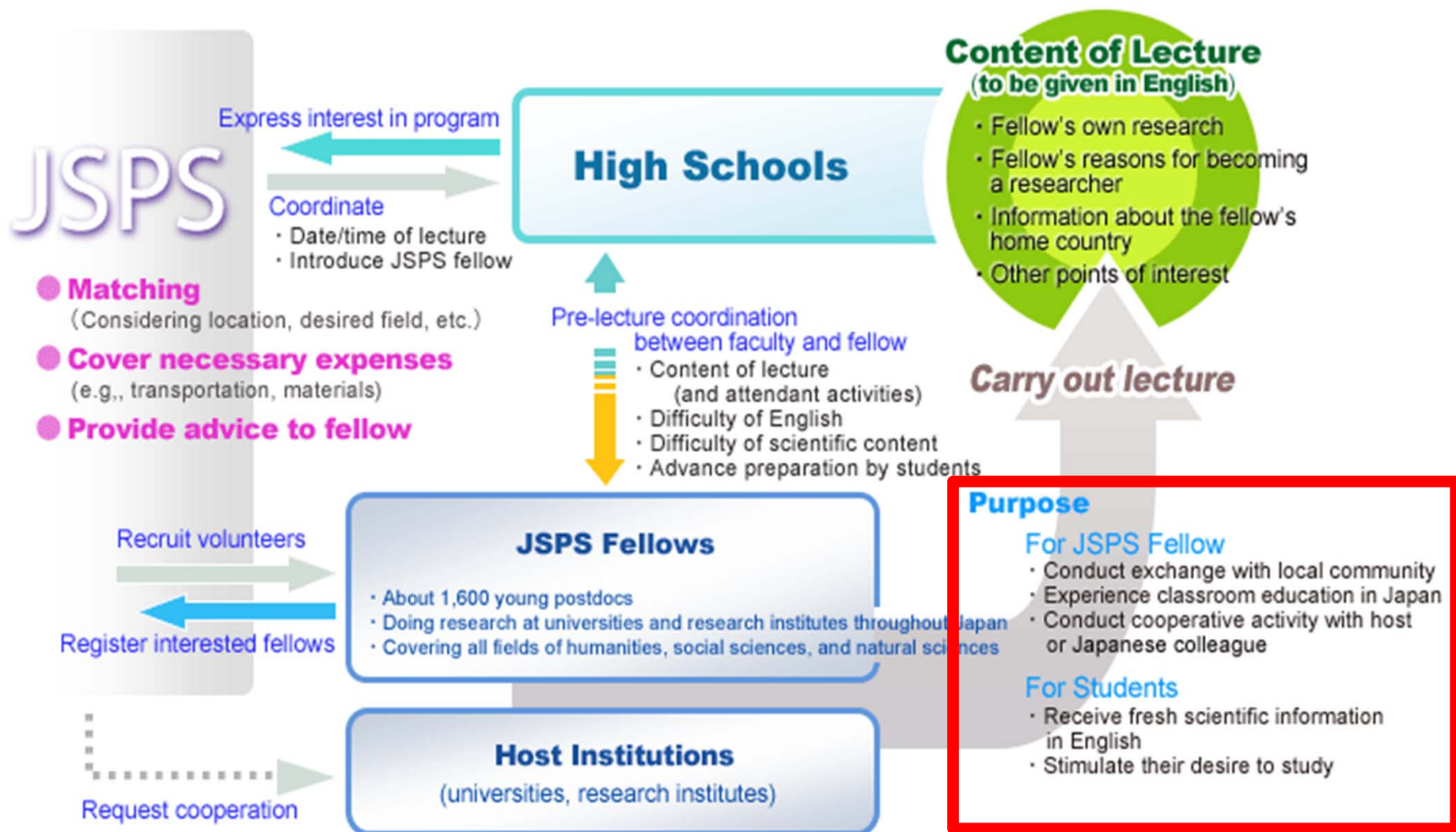
岡山大学 理学部





平成二十年度 第七回スーパーサイエンス
講師 岡山大博士
LEWIS
N
A 博
究科
スクール講演

Science Dialogue Program



[Home](#)[About UK-JSPS Alumni Association](#)[Events](#)[Funding opportunity for alumni](#)[JSPS Fellow's Experiences in Japan](#)[Alumni Member's Activities](#)[Contact Us](#)[To Register](#)[Search for Members](#)[Alter Details](#)

Find us on
Facebook



UK-JSPS Alumni Association

Making UK-Japan Academic Linkage

[Benefits for Joining](#)

NEWS

[Archive](#)

30 Apr 2012 [Pre Departure Seminar and Alumni Evening](#)

Pre Departure Seminar and Alumni Evening on May 25th (by invitation only)

[[see more](#)]

26 Apr 2012 [UCL Symposium \(25th to 26th June 2012\)](#)

Supported by the JSPS London PHASE 2 Symposium Scheme "Mitochondria- from the fundamental aspects to medical importance." UCL ...

[[see more](#)]

28 Feb 2012 [Cancer Research UK Symposium \(9th to 10th February 2012\)](#)

Title of Symposium: Interdisciplinary approaches for the study of senescence UK Scientific Lead: Masashi Narita, MD, PhD, ...

[[see more](#)]

28 Feb 2012 [JSPS London FURUSATO Awards Call for Applications](#)

JSPS London FURUSATO Awards Call for Applications Closing Date for Applications: 30th March 2012 Visit

Period: Between June ...

[[see more](#)]

15 Feb 2012 [Manchester Symposium \(5th to 6th January 2012\)](#)

Title of Symposium: Risky Engagements: encounters between science, art and public health.' UK Scientific Lead: Dr Rupert Cox, ...

[[see more](#)]



Programmes for Revisiting Japan

UK-JSPS Alumni Support Schemes (comparison chart)

	BRIDGE	FURUSATO
Value of Award:	Worth approx. £7,000 for 45 days	£2,000
Duration:	14 to 45 days	Flexible
Starting Date:	July through the following March	Anytime between May to March
Selection Period:	3 months	3 weeks
Calls for Application:	Once a year: February	Twice a year: February and July

All details in this chart are subject to change.



With thanks to Professor Takahisa Miyatake, the Okayama Evolutionary Ecology group and JSPS