



Life as a JSPS Fellow

Mary Redfern

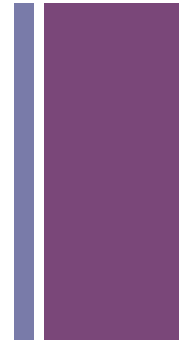
PhD Candidate

School of Art History and World Art Studies

University of East Anglia

+ Ceramics for the Imperial table: crafting objects and identities in Meiji-era Japan

- JSPS London Short Term Award Fellowship
- 21 January – 20 July 2013
- Graduate School of Social and Cultural Studies, Kyushu University
- Host Researcher: Professor Mizoguchi Koji





Research undertaken during the Fellowship

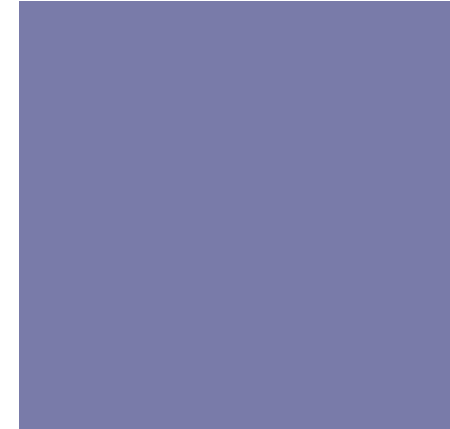


- More than 400 objects surveyed in the following public and private collections:
 - Reikanji, Kyoto; Kyoto City Archaeological Research Institute; Kyoto Prefectural Library and Archives; Miyanaga Tozan Kiln, Kyoto; Tsuji Hitachi Kiln, Arita; Koransha, Arita; Fukagawa Seiji, Arita; Kyushu Ceramics Museum

- Archival research of designs, orders, associated materials undertaken at the following:
 - Archives of the Imperial Household Agency, Tokyo; Tsuji Hitachi Kiln, Arita; Arita History and Folklore Museum; Imari City History and Folklore Museum



Ito Campus Kyushu University





+ Graduate School of Social and Cultural Studies
Kyushu University

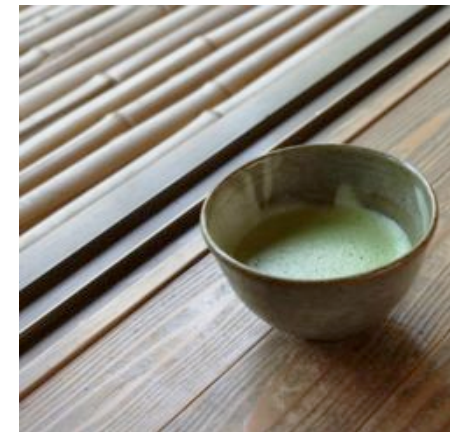
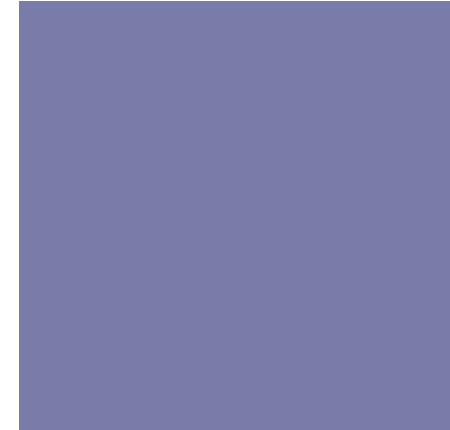
April, 2013





Pre-departure Preparations

- Currency and credit cards
- Business cards
- Research requirements
- Preparing for life in Japan



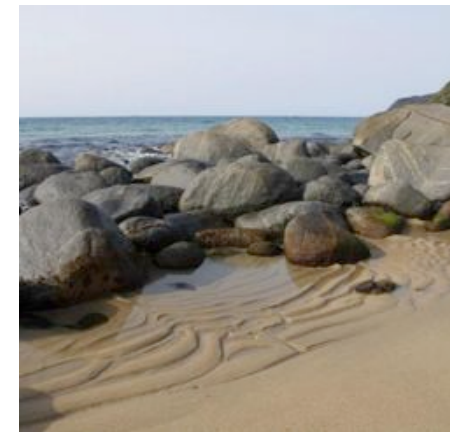
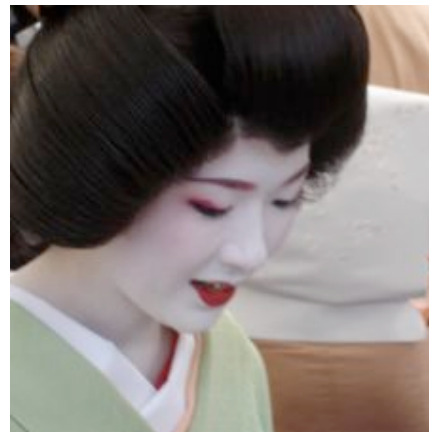
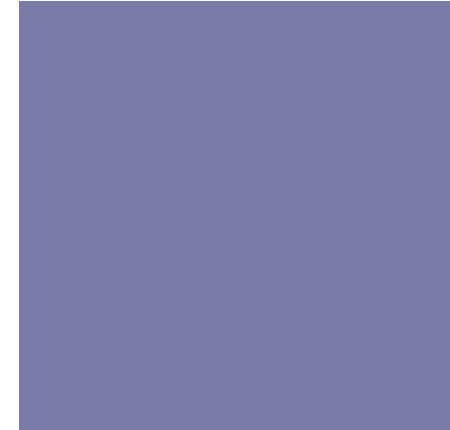


Living in Japan

- **Accommodation**
- Mobile phones / internet
- Banking
- Travel

Accommodation:

- University arranged
- Privately leased
- Charges and fees: deposits, key money and agent fees
- Small household goods:
 - Daiso / 100 yen stores



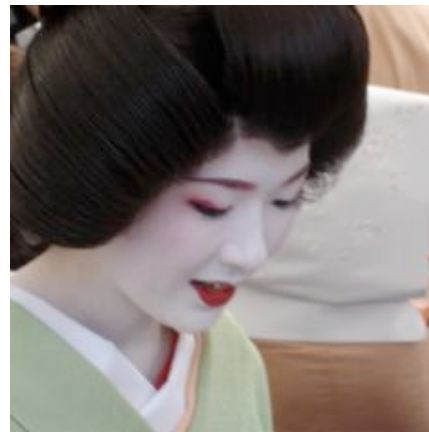


Living in Japan

- Accommodation
- **Mobile phones / internet**
- Banking
- Travel

Mobile phones and internet:

- Rental / prepay / contract
 - Softbank prepaid service
http://mb.softbank.jp/en/prepaid_service/
- Wi-fi access
 - Starbucks free wi-fi
http://starbucks.wi2.co.jp/sp/sma_index_en.html



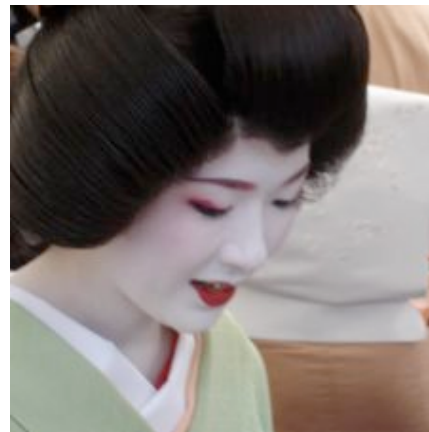
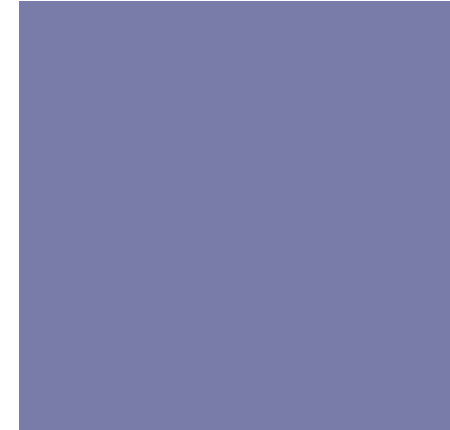


Living in Japan

- Accommodation
- Mobile phones / internet
- **Banking**
- Travel

Banking:

- Carrying cash
- JPBank (Japan Post Bank)
<http://www.thejapanguy.com/how-to-open-a-japan-post-bank-account/>



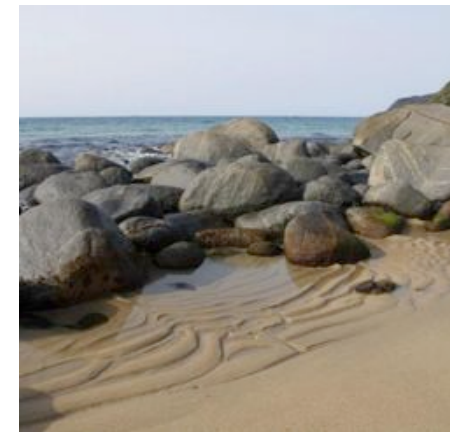
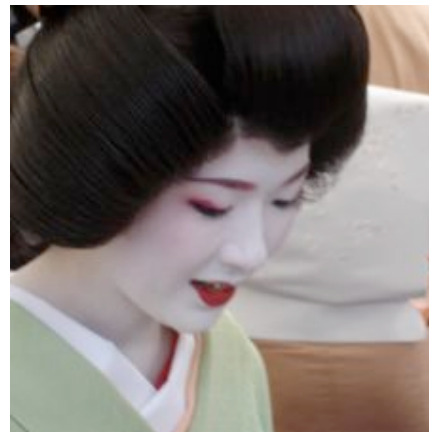
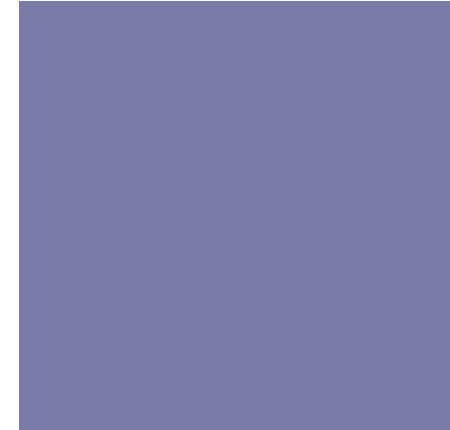


Living in Japan

- Accommodation
- Mobile phones / internet
- Banking
- **Travel**

Travel:

- Train timetables
<http://www.hyperdia.com>
- Suica/Pasmo etc.
- Japan Rail Pass
- Low cost airlines:
Jetstar, Peach, AirAsia





Working in Japan

- Office culture
- Research culture
- Building networks
- *Omiyage*





Beyond the Fellowship...

- UK JSPS Alumni Association
- Maintaining links

