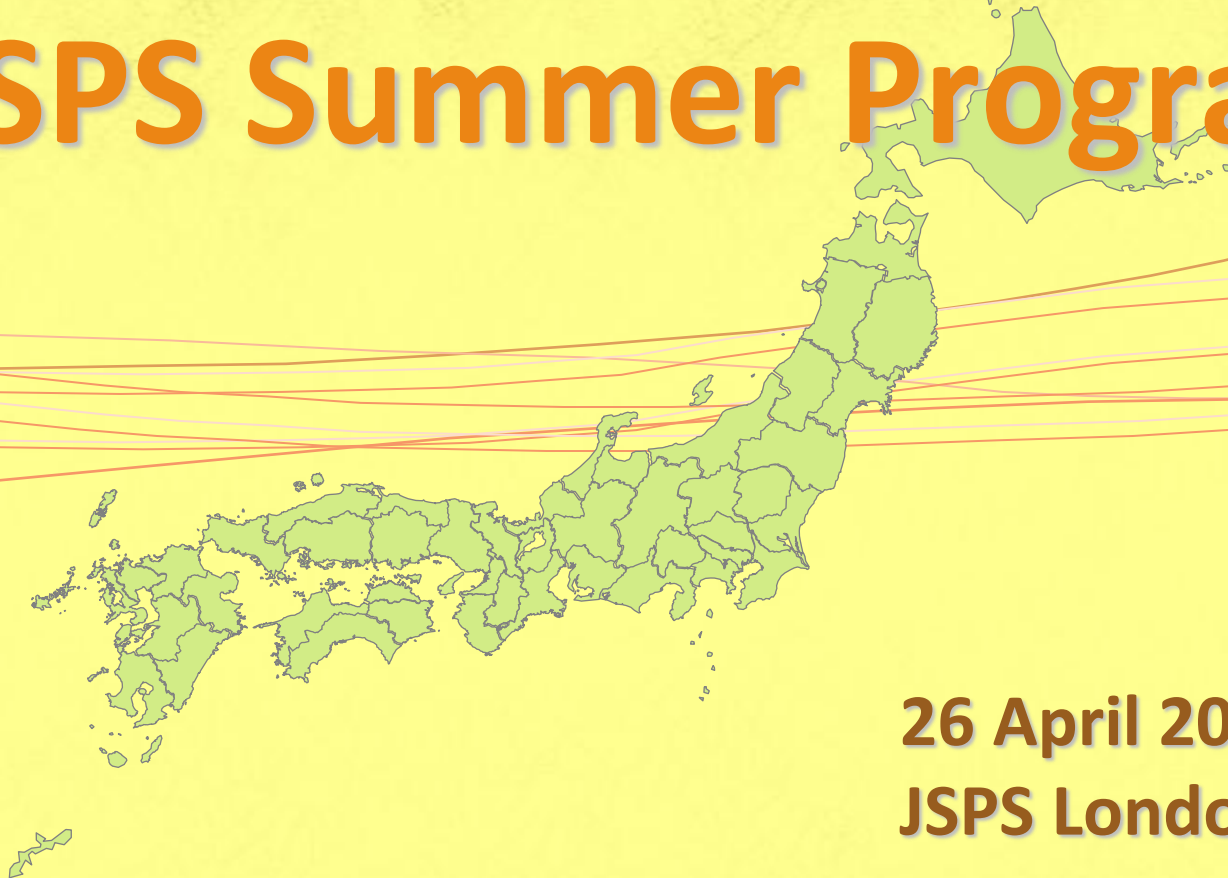


Pre-Departure Orientation in LONDON

Living and Doing Research Abroad

(Finance/Logistics/Schedule/Passport and Visas)

JSPS Summer Program

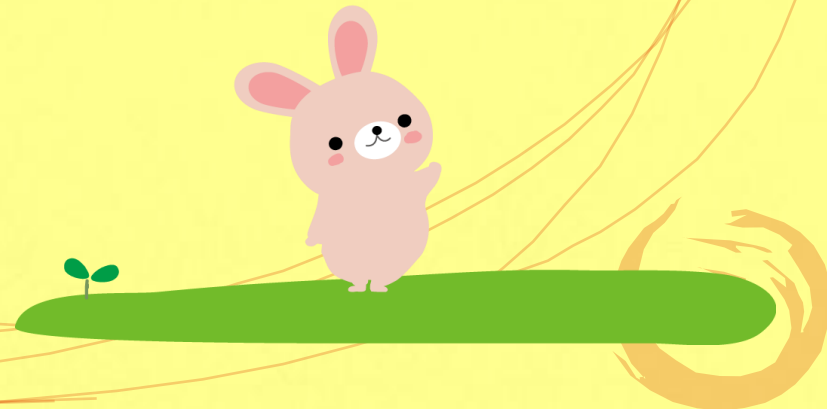


26 April 2013

JSPS London Office

Topics

- Introduction
- Before You Come to Japan
- When you are in Japan



History of the Program

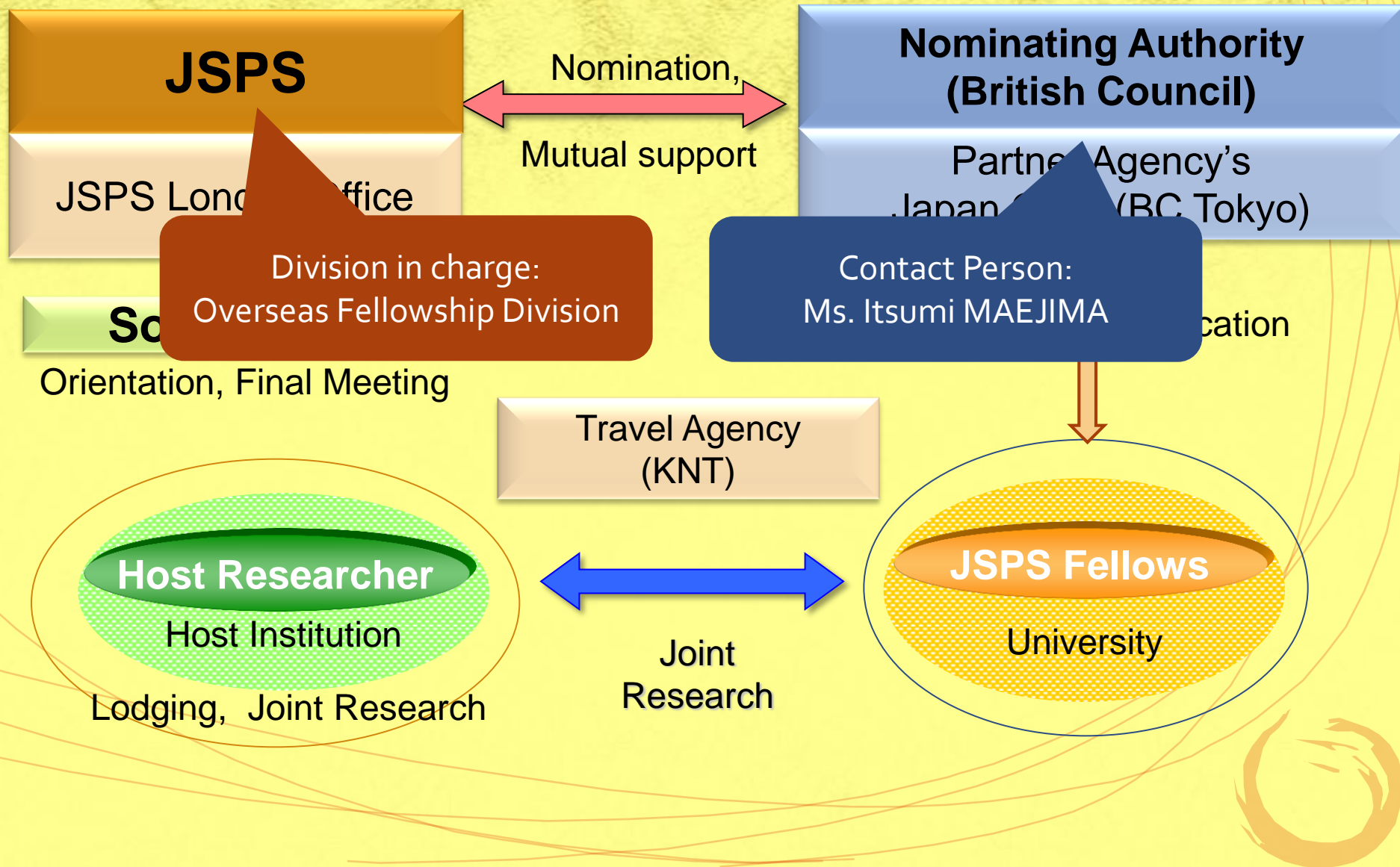
~2002: • MEXT Research Experience Fellowships
for Young Foreign Researchers
• MEXT/NSF Summer Program

2003~ : ★ JSPS Summer Program ★

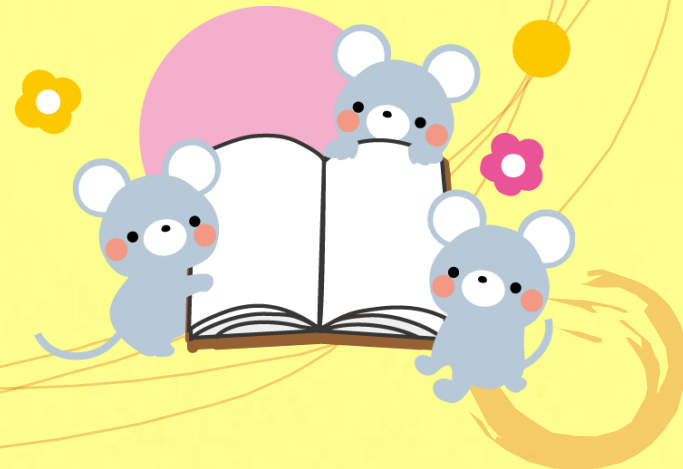
Participants : 116 pre/postdoctoral researchers
(US:58, UK:17, France:13, Germany:13 and Canada:15)



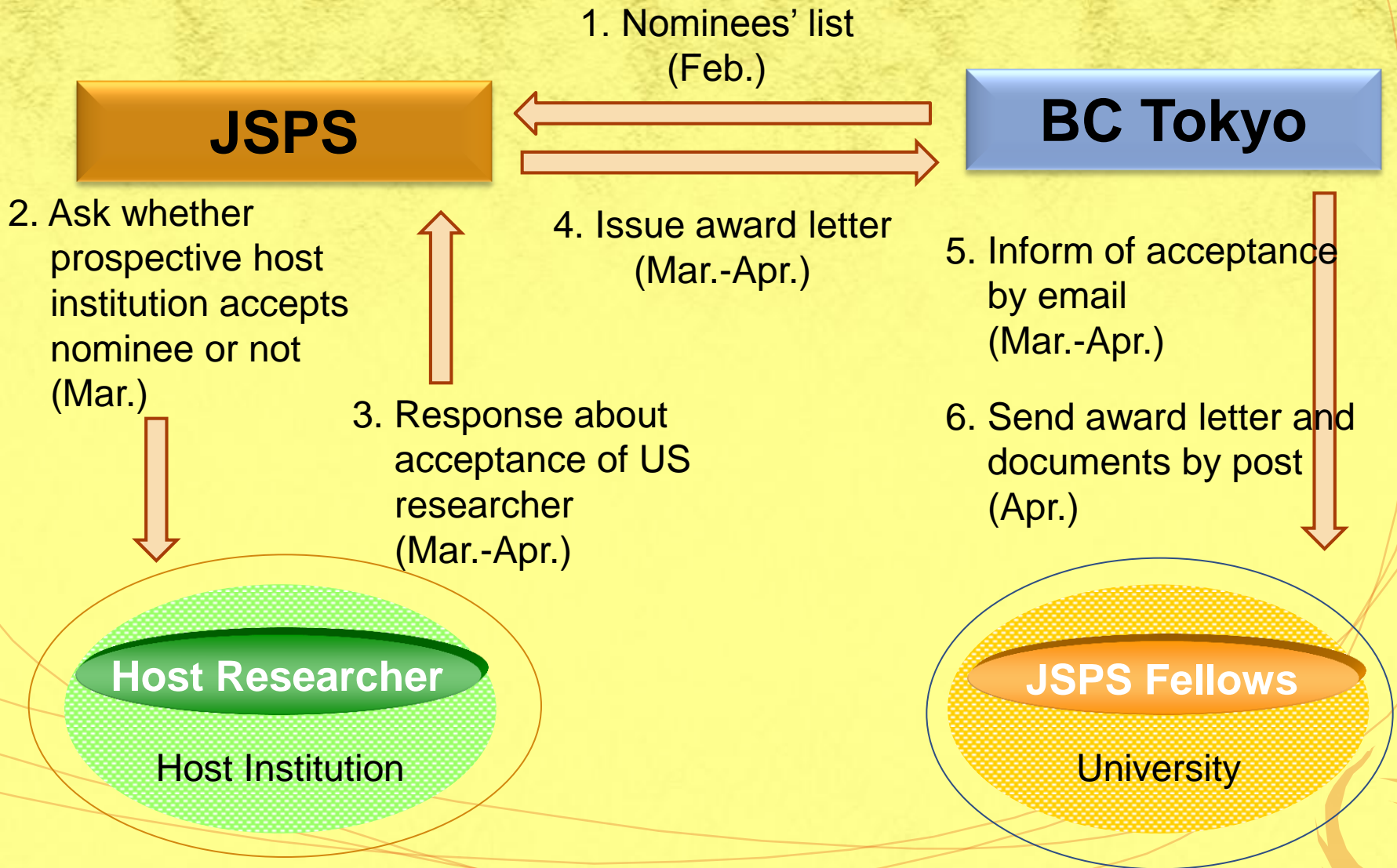
System of the Program



Before You Come to Japan



Issuing Award Letter



Documents

AWARD LETTERS from JSPS

- ID number for UK Fellows starts with SP131XX
- **"Terms & Conditions"**
- Health Insurance Guideline

VISA

- No visa is necessary for British if your stay is less than 90 days
- If you should need a visa: JSPS will issue a Financial Support Certificate



Preparation

- Consultation with host

- Research plan
- Lodging (JSPS does not arrange)
- How to get to your host institute from Tokyo

- Baggage

- 1) Cloths and items for use during the orientation period (+ cash!)
- 2) For use during the rest of your stay
 - will be sent to your host institute from Narita Airport
(If you arrive on June 11)



50,000 yen (£360)

Useful Websites

- KNT registration for air tickets

<http://www.knt.co.jp/ec/2013/jsps/>



*Domestic travel can be arranged by KNT

*Cell phones can be rented via KNT's website

- Train connections found on 'Jordan' website



Summer Program 2013
JSPS Japan Society for the Promotion of Science

- 1 ▶ Program schedule
- 2 ▶ Fellowship
- 3 ▶ Insurance
- 4 ▶ Lodging Arrangements
- 5 ▶ Airport Meeting Service, etc.
- 6 ▶ Reports and Questionnaire
- 7 ▶ Obligation
- 8 ▶ Others
- 9 ▶ Useful website for travel in Japan
- 10 ▶ Air ticket arrangement

This page covers the same contents as "Terms and Conditions for JSPS Summer Program 2013" which is enclosed in the award letter from JSPS.

1 ▶ Program schedule ▲ head

June 11 (Arrival) August 21 (Departure), 2013

Date	Schedule	Accommodation
11 June	Arrival in Japan at Narita International Airport	International Garden Hotel Narita
12 June	Opening of the Program Hold an opening reception	Shonan Village Center (SVC)*
12 - 18 June	Orientation session**	
18 June	Move to host institutions	Accommodation arranged by the respective host institution
19 June - 19 August	Research experience at host institutions	
20 August	Move to Tokyo Hold a research report presentation meeting and a farewell party	Hotel Grand Palace

KNT Registration in Detail (1)

JSPS Summer Program 2013
Japan Society for the Promotion of Science

Air Ticket Arrangement

To the participants of the JSPS Summer Program:
Regarding registration for JSPS Summer Program air ticket and individual data.

Kintetsu International Co., Ltd
Open: Monday- Friday 9:30am - 5:30 pm (Japan time)
Closed: Saturdays, Sundays and holidays from 28th April to 6th May
E-mail: jsp2013-ecc5@or.knt.co.jp
Phone: +81-3-6891-9305 Fax: +81-3-6891-9405

We are Kintetsu International, the travel company that will be helping you make arrangements. All the steps required can be done on line.

<< IMPORTANT >>
If you wish to change arrive / depart as announced by JSPS, your host researcher BEFORE making registration and must inform the both JSPS and the nominating authority.

★ For the addresses of nominating authorities, please check [JSPS 2013 website](#) ("No6 Contact addresses")

Procedures:

1. Please click **NEXT** button below and click registration button as first step.
2. Enter the password issued by JSPS and proceed registration.
3. Once you completed registration, you will receive your Registration Number and Individual Password to write them down. You will need your Individual Password to make any change.

* As soon as we have arranged your flights, we will email you a Reservation Confirmation Form of how to receive your air tickets.

* In principle, the air tickets provided will be discounted economy round trip tickets to the airport nearest either the institution to which you are currently affiliated or your home in Japan. If you wish to make special arrangements, you will need to pay extra fee by credit card. Details will be included in the Reservation Confirmation Form you receive by email. Please confirm the extra fee and sign the form, and return it to Kintetsu International by email or fax.

* If you have any questions, please contact us by email.

"NEXT"

1. Enter the Password (written in the letter from KNT, sent to you with award letter): *natsu-matsuri*

JSPS Summer Program 2013
Japan Society for the Promotion of Science

Please type in JSPS Summer Program Password to Registration form.
Summer Program Password:

Those who arrive/depart as schedule announced by JSPS, please click "Registration" button below.
[IMPORTANT]
If you wish to change arrive/depart as announced by JSPS, you need approval from your host researcher BEFORE making registration and must inform the both JSPS and the nominating authority.

2. Click "Registration " Button to the Next Page

<http://www.knt.co.jp/ec/2013/jsp2013/>

KNT Registration in Detail (2)

JSPS Summer Program 2013
Japan Society for the Promotion of Science

JSPS SUMMER PROGRAM Participants;
We are very pleased to take this opportunity to organize the air ticket between you and Kintetsu International Co., Ltd., exclusive travel agent for JSPS SUMMER PROGRAM. We will make the flight arrangement smoothly.

Please use registration form and fill out your information.
After that we will start book your flight and others.

The following information shall be disclosed to the related organizations on a need-to-know-basis.

Note: Items with *(an asterisk) must be completed to process your registration.

PARTICIPANT INFORMATION

1. JSPS Summer Program ID Number* :
2. Name as on your passport:
First Name* :
Middle Name :
Last Name* :
3. Gender* : ☒ Male ☐ Female
4. Your phone number* :
(e.g. : +Country Code - Area Code - Local Number)
5. Your residence address* :
6. E-mail address* :
May an e-mail address be indicated to the participants?
☐ Yes ☒ No
7. Departure airport:
8. Arrival date in Narita: Day Month June
9. Departure Airport to your country:
10. Date of your return: Day Month August Year
11. Date of birth* : Day Month Year
12. Nationality* :

Any flight request:

3. Enter Your Information for Booking Air Ticket: Name, ID Number, Contact Address, Departure Airport(Nearest to Your Institution or Home)...

4. You can Add some Requests for the Flight (if any)

<http://www.knt.co.jp/ec/2013/jsp/>

KNT Registration in Detail (3)

5. Enter Your Information for Matching You with the Host Family: Food Allergies, Hobbies...

VISITORS APPLICATION (These data are used only for your host home)

1. What language do you speak? *
2. How well do you speak and understand Japanese? *
3. Do you have any allergies? *

Pets

Food

Plants

Specify:

4. Do you have diet restrictions? *

Specify the food you can / cannot eat

Beef

Pork

Chicken

Milk

Eggs

Fish

Raw fish

Octopus

Squid

Others

(If there is any food you cannot eat for medical, religious or other reason, please write down in detail.)

5. Do you smoke? *

Do you prefer a non-smoking host family?

6. Do you prefer a host family without small children (under 5 years old.) ?*

7. List your hobbies and interests.

8. Please make any comments about your housing arrangement that you think might be helpful to us when making accommodations.

We will make the best possible match but cannot guarantee that all your preferences will be met.

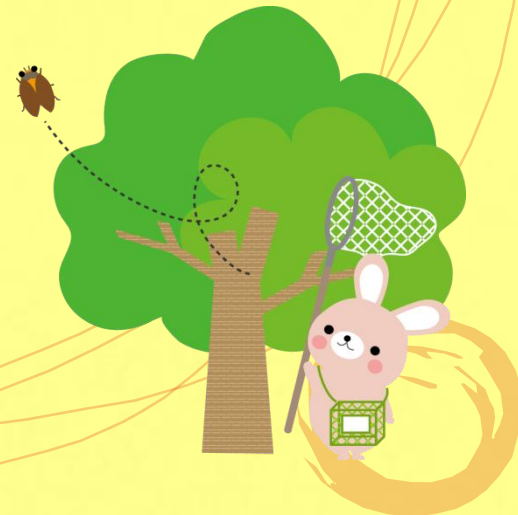
☐ Beginner ☐ Advanced
☒ No ☐ Yes
☒ No ☐ Yes
☒ No ☐ Yes
☒ No ☐ Yes

☐ cannot eat ☒ can eat
☐ cannot eat ☒ can eat
☐ cannot eat ☒ can eat
☐ cannot eat ☒ can eat
☐ cannot eat ☒ can eat
☐ cannot eat ☒ can eat
☐ cannot eat ☒ can eat
☐ cannot eat ☒ can eat
☐ cannot eat ☒ can eat

☐ Yes ☒ No
☐ Yes ☒ No
☐ Yes ☒ No

<http://www.knt.co.jp/ec/2013/jsps/>

When you are in Japan (Logistics, Finance & Obligations)



Schedule

Dates	Activities
June 11	Arrival. Hotel Registration
June 12	Move from Narita to Sokendai Opening Ceremony
June 12– 17	Orientation
June 18	Move to host institution
June 19 – August 19	Research
August 20	(A.M.) Move to Tokyo (P.M.) Final Reporting Meeting
August 21	Departure



Submit your Report by August 16.
Two representatives will talk!

Orientation in Sokendai

Date (tentative)	Activities	Housing
Day 1	Opening Ceremony	Sokendai
Day 1, 2	Lectures Japanese Language	
Day 3	Poster Presentation. Submit the summery deadline is May 25.	
Day 6	Lectures Japanese Language	Sokendai
Day 7	Move to host institution	Near host institution



Arranged by Sokendai

Sense of Geography ?



Financial Support

1. Air Ticket

Round-trip air ticket

*Make arrangements through KNT.

For any changes, obtain your host's permission and inform JSPS and BC!

2. Allowances

- Maintenance Allowances: 534,000 yen(£3,800)
- Domestic Research Trip Allowance: 58,500 yen(£410)
- Bring some cash!!

Deposited in your host researcher's bank account

3. Insurance(Nipponkoa)

*Overseas Travel Insurance

*Keep your Insurance Card in hand (handed out at Sokendai)



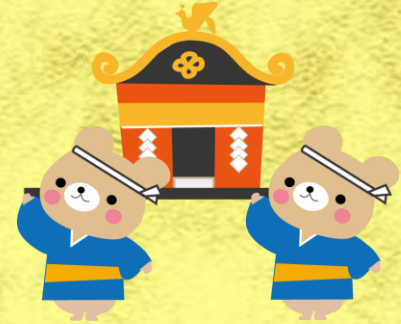
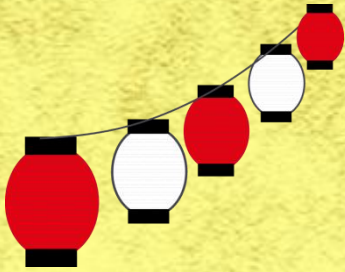
What you need to do



- Research WORK!
(You may be visited by JSPS officials)
- Submit receipt for Allowances
- Submit report , questionnaire, mailing address for future contact

JSPS Quarterly& UK
Alumni Association

TIPS



- Enjoy mixing with your colleagues, local community
- Konnichiwa, Arigato
- Summer in Japan... festivals, fireworks...
and ... **very hot and humid !!!**

JSPS Fellowships for Research in Japan



Ph.D.

Career Stages of Researchers

Ph.D. Courses 6 years after Ph.D. Mid career Professor Nobel Prize level

Postdoctoral Fellowships (Standard)

1 - 2 years
500 Fellows /Year

Invitation Fellowships for Research in Japan

(Long-Term)
2 -10 months
About 80

(Short-Term)
14-60 Days
About 280

(Short-Term S)
7-30 Days
About 4-6

Summer Program

2 months
About 110

Postdoctoral Fellowships (Short-term)

1 - 12 months
About 150

After the Fellowship...

JSPS UK Fellows Alumni Association

- Chair: Dr. Martyn Kingsbury
- About 200 members
- BRIDGE Fellowship Program...Re-visit Japan!



Again, for details...

◆ Website:

The image shows a screenshot of the JSPS Summer Program website. A large yellow oval with a purple outline is centered over the page, containing the email address **summer@jsps.go.jp**. Two callout boxes are present: a green one on the left for public information and an orange one on the right for participant information.

JSPS Japan Society for the Promotion of Science

JSPS Summer Program

PUBLIC:
www.jsps.go.jp/english/e-summer/

JSPS Summer Program 2013

For Participants:
<http://www.jsps.go.jp/english/e-summer/pro2013/main.html>

summer@jsps.go.jp

British Council (UK), Centre National de la Recherche Scientifique (France), Deutscher Akademischer Austauschdienst (DAAD) (Germany), the Canadian Embassy in Tokyo, etc.

Accommodation arranged by the respective host institution
[Hotel Pacific Tokyo](#)

Leaflet (PDF)

● JSPS HOME
Japanese

Thank you.
ありがとうございます。

See you in Japan!
日本で会いましょう！

